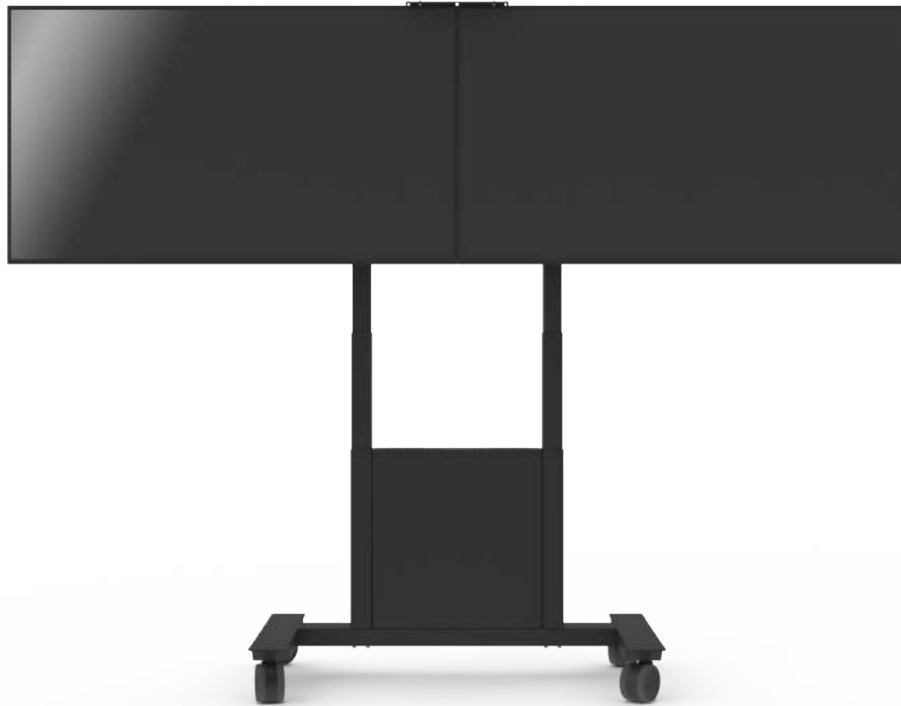


# Func Mobile Motorized Video Conference



---

## Video conferencing on many levels.

Func Mobile Motorized Video Conference is easy to adjust for different needs. The very stable design is perfect for large heavy displays and touch-sensitive displays. The motorized height adjustment ensures the user to present or interact with the display in an ergonomic position, whether very tall, short, standing up or sitting down. Thanks to the wheels, it is easy to move the unit between different rooms. In other words, perfect for places where the displays will be the center of attention for people with different needs. The design includes a storage box for e.g. mini-PC, codec or laptop, easily accessed from the front. The box can be locked with a padlock (not supplied).

The displays can also be locked with a padlock (not supplied) or the accompanying locking pin, which provides increased protection from theft and personal safety. A camera shelf and remote control is included in the delivery.

**INFO**

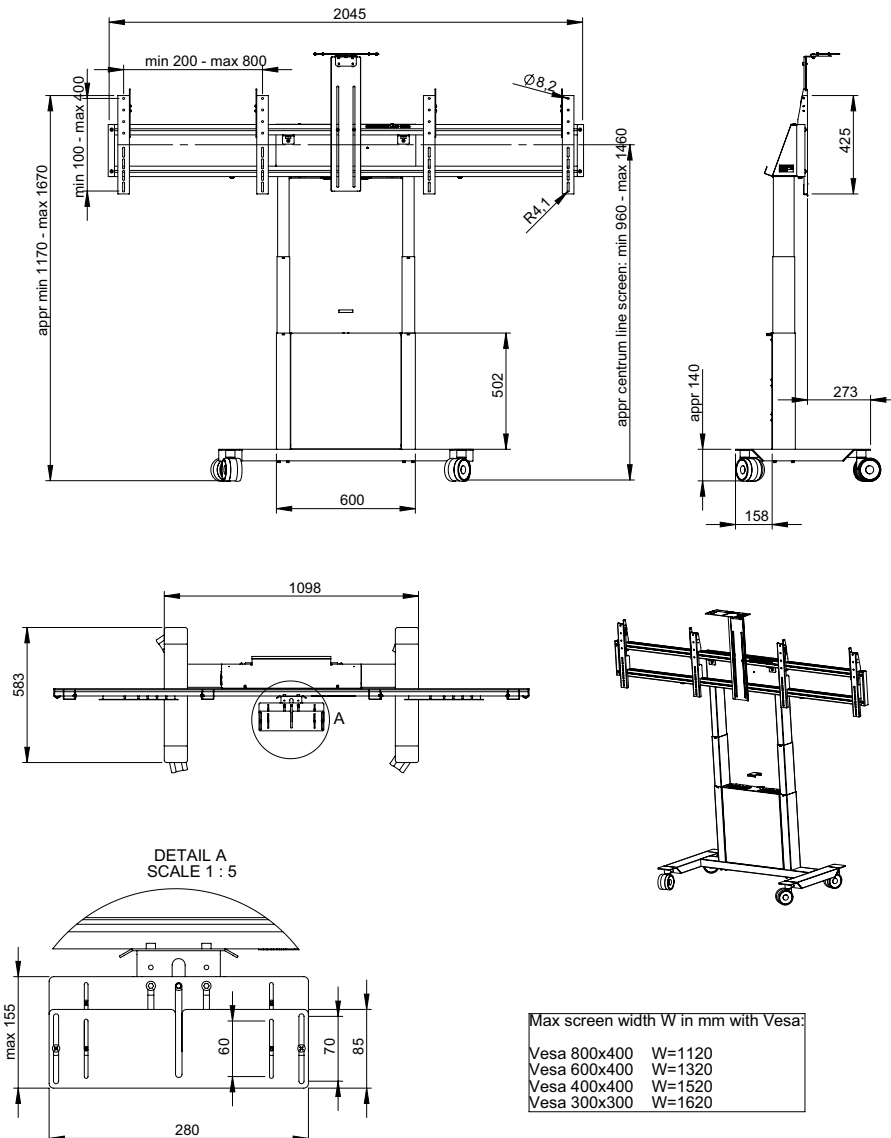
Finish: Black  
 Maximum weight of each display: 55 kg  
 Horizontal VESA: 200 - 800  
 Vertical VESA: 100 - 400  
 Stroke: 500 mm  
 Lockable: with the accompanying locking pin or with a padlock (not included).  
 Dedicated area for storage inside the product [mm]:  
 496 x 472 x 96.  
 A camera shelf (black) and remote control is included.

**ART. NO. DESCRIPTION**  
**FMT032001-P0 Func Mobile Motorized Video Conference**

**NB!** Apart from the display weight and the VESA standard, please make sure that your display is not wider than given max display width in table here below.

Max display width in mm:  
 VESA 300x300 W=1620  
 VESA 400x400 W=1520  
 VESA 600x400 W=1320  
 VESA 800x400 W=1120

**PRODUCT DIMENSIONS [mm]**



We reserve the right to introduce changes in the product specifications after the printing and publication of this document.