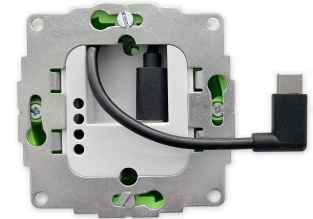


## Product sheet s48 C

**Product No.** s48 C  
**Product** sCharge 20W USB-C  
**MPN** sCh-20W-USBC-1.0  
**Short description** In-wall power supply, 20W USB-C  
**PD Net weight (kg):** 0,12

**Customs tariff no.** CTN 8504 4082  
**EAN:** 4260258612486  
**Length (m):** 0,05  
**Width (m):** 0,08  
**Height (m):** 0,08



In-wall power supply, 20W with USB-C cable

20W flush-mounted power supply with USB C to USB-C cable.  
 Nominaler Input: 100 - 250 V ~, ±10 % , 50 - 60 Hz  
 Nominaler Output: 5V,3A und 9V, 2,22A USB PD  
 USB PD = Power Delivery Standard

### Compatibility

All products with USB C connection  
 The sCharge 20W fits in all standard device sockets with min. 42mm depth

### Standards

Low Voltage Directive EN 62368-1:2014 + A11:2017 EMC Directive EN 50032:2015  
 Ecodesign Directive 2009/125/EC, 2019/1782/EC RoHS Directive 2011/65/EU, 2015/863  
 Reach Regulation EC No 1907/2006, 1272/2008

### Scope of delivery

Flush-mounted power supply unit 20W with USB-C cable, 30 cm long  
 Instructions in DE, FR, ES, IT, PL, NL

### Material

Metal support frame, plastic housing  
 RoHS compatible  
 WEEE registration: DE 64398562

### Dimensions

Box 50 x 80 x 80 mm (HxWxD)

### Weight

125 g (incl. adapter cable and packaging)

### Packaging:

Completely made of cardboard

Made in China.