

SLWS250/BK

## Ultra Slim Articulating Wall Arm For 32" to 46" Ultra-thin Flat Panel Displays\*

This slim articulating mount transforms the viewing experience from ordinary to extraordinary. Ultra-thin displays give the room a contemporary look, but only when married to an ultra-slim mount that allows the maintenance of the ultra-thin aesthetic and still position the display at the best viewing angle. Brilliant in its simplicity and ease of installation, the mount's functionality is optimized through its remarkable arm extension and swiveling hinge. Now you can create the perfect viewing angle and truly achieve the ultra-thin experience at the same time.



Display size: 32"-46"



Max load: 60lb (27.22kg)

### FEATURES

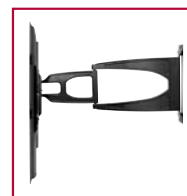
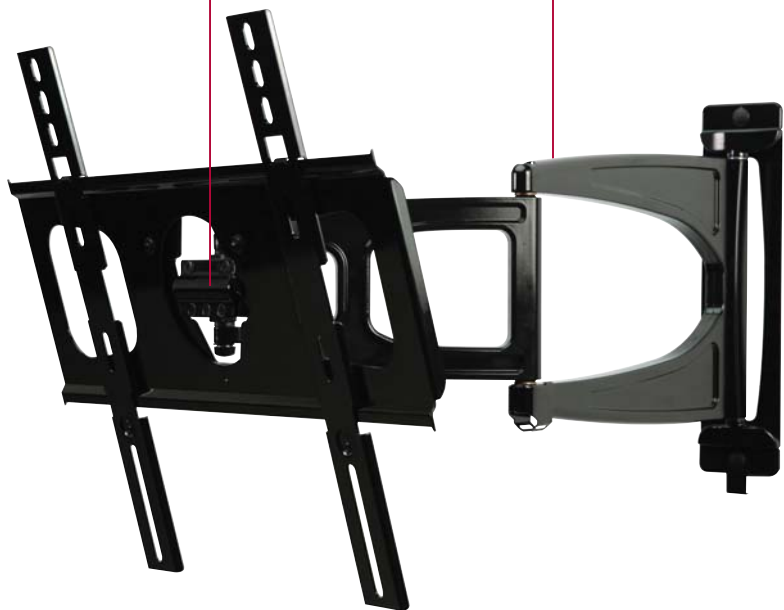
- Universal mount fits displays with mounting hole patterns up to 450 x 402mm (17.73" x 15.81") and VESA® 200 x 100, 200 x 200, 400 x 200 and 400 x 400mm compliant
- Arm retracts to only 1.27" (32mm) and extends up to 24.15" (613mm) from the wall
- +15/-5° of One-Touch™ tilt allows for ideal viewing angles without the use of tools
- Up to ±90° of side-to-side swivel
- ±5° of roll offers a simple way to horizontally level the display post-installation
- Two-screw wall attachment allows for a fast installation

#### EFFORTLESS MOTION

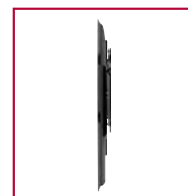
One-Touch™ tilt allows for ideal viewing angles with ease

#### FROM NOTHING TO EVERYTHING

Arm retracts to only 1.27" (32mm) and extends up to 24.15" (613mm) from the wall



Fully extended



Flat against the wall



Improved tilt hinge

\* Designed exclusively for use with ultra-thin displays 2" (50.8mm) deep or less



CLICK: [www.peerless-av.com](http://www.peerless-av.com)

CALL: 800.865.2112

FAX: 800.359.6500

peerless-AV™

## Model Numbers

**WARRANTY:** Limited 5-year

**SLWS250/BK** Ultra Slim Articulating Wall Arm for 32" to 46" Ultra-thin Flat Panel Displays

## Product Specifications

	DIMENSIONS (W x H x D)	PRODUCT WEIGHT	LOAD CAPACITY	FINISH	AVAILABLE COLORS
<b>SLWS250/BK</b>	20.15" x 16.75" x 1.27" - 24.15" (512 x 425 x 32 - 613mm)	12.25lb (5.56kg)	60lb (27.22kg)	Scratch resistant fused epoxy	Gloss Black

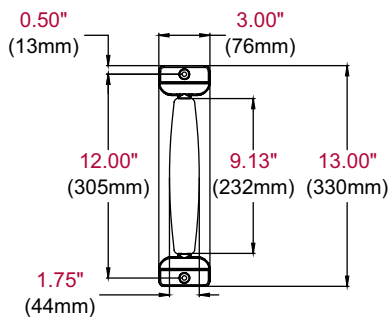
## Package Specifications

	PACKAGE SIZE (W x H x D)	PACKAGE SHIP WEIGHT	PACKAGE UPC CODE	PACKAGE CONTENTS	UNITS IN PACKAGE
<b>SLWS250/BK</b>	14.25" x 2.625" x 21" (362 x 67 x 533mm)	14lb (6.35lb)	735029282068	Mount, attachment hardware for display and wall, instructions	1

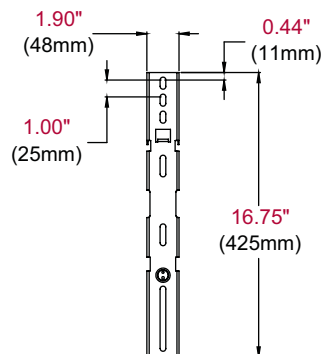
## Accessories

**ACC919:** Security Fastener Pack  
**ACC-SB:** Soundbar Mount

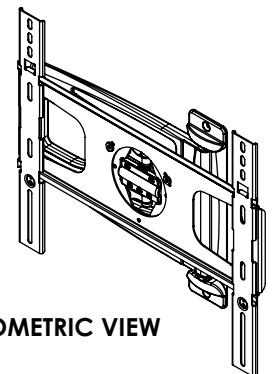
All dimensions = inch (mm)



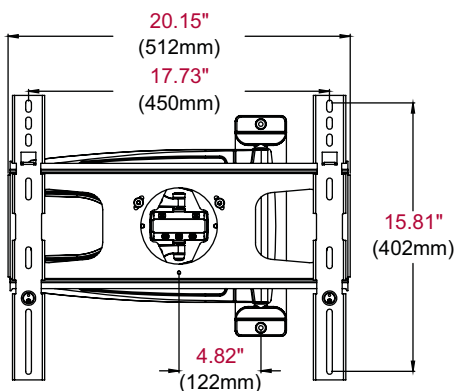
**WALL PLATE**



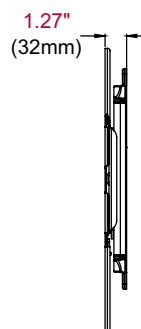
**VERTICAL ADAPTER**



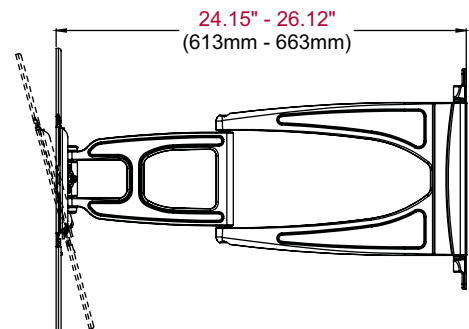
**ISOMETRIC VIEW**



**FRONT VIEW**



**SIDE VIEW RETRACTED**



**SIDE VIEW EXTENDED**

## ARCHITECTS SPECIFICATIONS

The Ultra Slim Articulating Wall Arm shall be a Peerless-AV model SLWS250/BK and shall be located where indicated on the plans. It shall feature scratch resistant black fused epoxy finish. Assembly and installation shall be done according to instructions provided by the manufacturer.

Peerless Industries, Inc. ■ 2300 White Oak Circle ■ Aurora, IL 60502 ■ (800) 865-2112 ■ (630) 375-5100 ■ Fax: (800) 359-6500 ■ [www.peerless-av.com](http://www.peerless-av.com)

Visit [www.peerless-av.com](http://www.peerless-av.com) to see the complete line of AV solutions from Peerless-AV, including flat panel mounts, projector mounts, carts/stands, furniture, cables, screen cleaners and a full assortment of accessories.