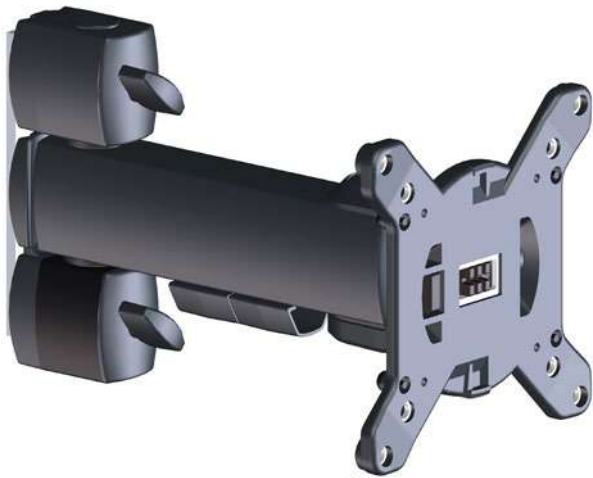


NOVUS POS arm M 200



This standard mount allows monitors with VESA standard 75x75 or 100x100 to be easily attached. The value indicates the hole spacing in mm.





The value indicates the maximum bearing capacity of the supporting element or the maximum weight of a mountable monitor in kg.



The quality statement „German Engineering“ ensures that a product was developed according to German quality standards by our engineering experts. All Novus products carrying the „German Engineering by Novus“ signet are manufactured in our own plants around the world by our own workforce, managed and supervised by our headquarters in Germany.

- High-quality, short POS support arm for mounting terminals and screens
- Suitable for VESA standards: 75x75 and 100x100
- Mounting of flat screens up to 10 kg
- Restrict movement by tightening the joints
- Range: 270 mm
- Swivelling and tiltable
- High-quality silver or black anodised aluminum profiles
- Removable clamping grips for protection from theft
- Obligatory supplement is a POS base

Version	Art.No.	EAN Code
 anthracite	852+2705+000	4009729064573
 Silver	852+2709+000	4009729064580