

PLASMA-W200

SPECIFICATIONS

GENERAL

Min. screen size*	37 inch
Max. screen size*	85 inch
Max. weight	100 kg (per screen)
Screens	1
VESA minimum	200x200 mm
VESA maximum	865x480 mm
Distance to wall	7 cm

FUNCTIONALITY

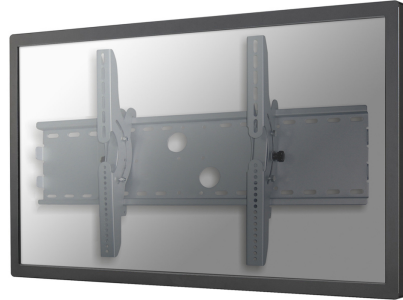
Type	Tilt
Tilt (degrees)	30°
Adjustment type	None
Lockable	Lockable - Lock not included

INFORMATION

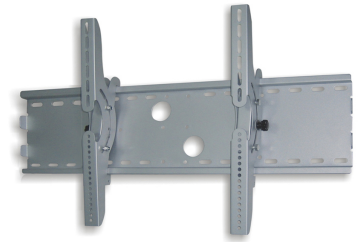
Color	Silver
Main material	Steel
Warranty	5 year
EAN code	8717371440596

*Please note: The inch sizes stated are just an indication, combined with the weight and VESA sizes. The maximum weight and VESA size are absolute restrictions for the products and should not be exceeded.

NEOMOUNTS BY NEWSTAR TV WALL MOUNT



Neomounts



Neomounts

Neomounts by Newstar TV/Monitor Wall Mount (tiltable) for 37"-85" Screen - Silver

The Neomounts by Newstar wall mount, model PLASMA-W200 is a tiltable wall mount for flat screens up to 85" (216 cm). This mount is a great choice when you want the ultimate viewing flexibility with your flat screen. Depth of this mount is 7 centimetres.

Neomounts by Newstars' tilt (30°) technology allows the mount to change to any viewing angle to fully benefit from the capabilities of the flat screen. Depth of this mount is 7 centimetres.

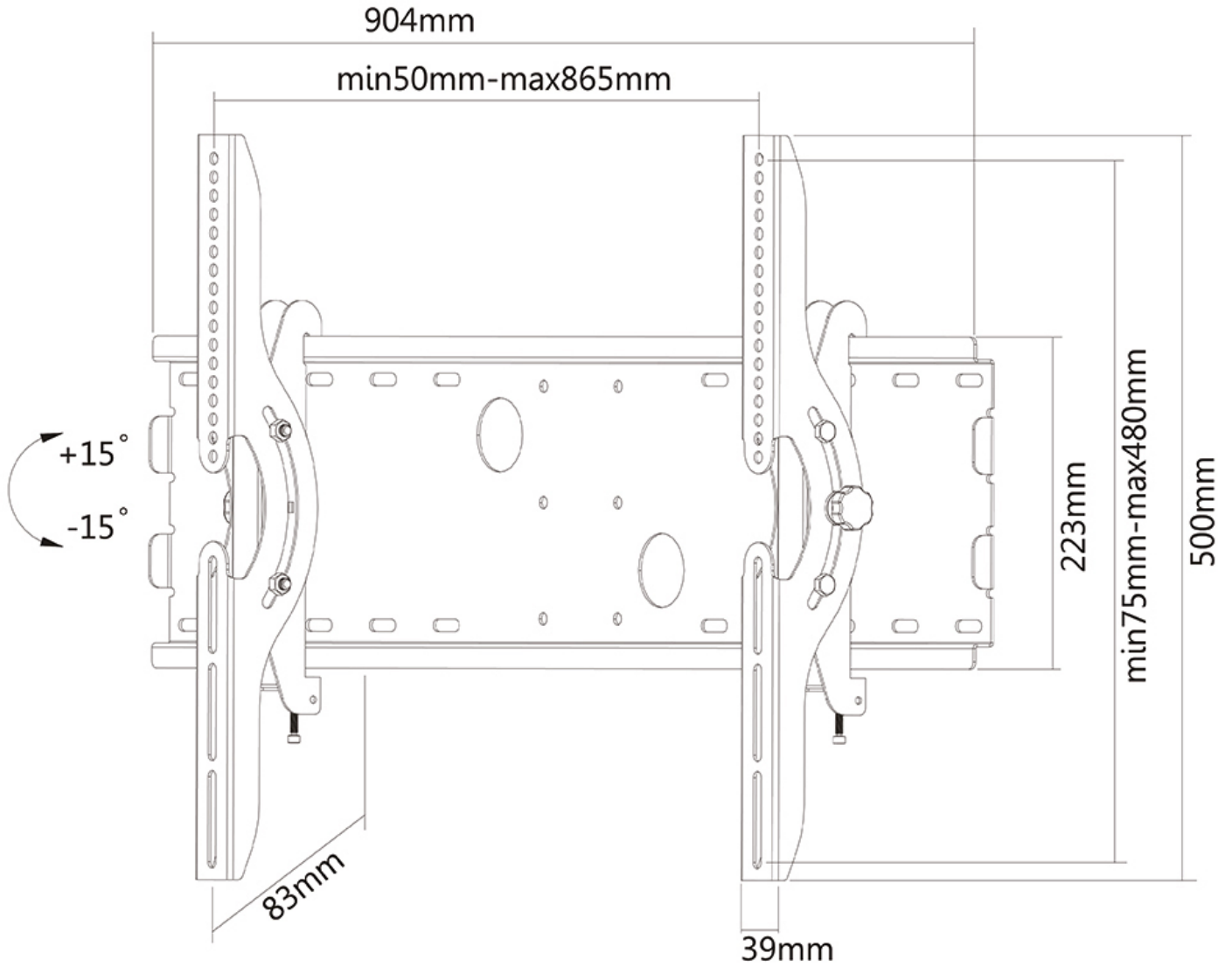
Neomounts by Newstar PLASMA-W200 is suitable for screens up to 85" (216 cm). The weight capacity of this product is 100 kg each screen. The wall mount is suitable for screens that meet VESA hole pattern 200x200 to 865x480mm. Different hole patterns can be covered using Neomounts by Newstar VESA adapter plates.

Create a clean design ambiance for your flat screen TV in the living room, bedroom or home cinema.

All installation material is included with the product.

PLASMA-W200

NEOMOUNTS BY NEWSTAR TV WALL MOUNT



Neomounts