

M2.1 / M8.1 / M10 Monitor Arms



Humanscale®

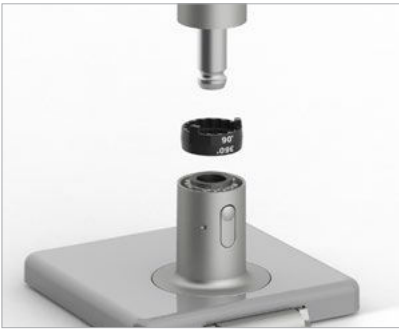
IN TODAY'S FAST-PACED, fully connected digital world, there's no time for discomfort. Humanscale's next generation monitor arm line instantly personalises any workspace for improved comfort, health and productivity. Designed for unprecedented adaptability in the agile workspace, our monitor arms focus on sustainability and the use of technology, while featuring ultra-sleek aesthetics and a reduced cost of ownership.



Design Story

Humanscale Design Studio refreshed the look and functionality of our monitor arm line to support how we work today. With more technology than ever before and increasingly agile workforces, our arms enhance the computing experience and overall workstation performance.

Features & Benefits



Smart Stop



Counterbalance Indicator



Easy Install Cable Management



Quick Release Joints

- Allows user to view their monitor(s) at an optimal position
- Rubberised Cable Management makes it simple to run cords through a modular system for a clean, sleek and organised aesthetic
- A patented, weight-compensating spring technology enables smooth and uniform height adjustment
- Built-in Counterbalance Indicator provides the ability to counterbalance the monitor weight before monitor installation to reduce expensive computer setup costs
- Patent-pending Smart Stop allows the user to customise the rotation of the arm, preventing overhang and protecting surrounding equipment
- Patent-pending Quick Release Joints instantly snap together for a secure and robust fit, simplifying installation. Only one tool is required, and it's neatly concealed inside the arm base
- Can be configured to hold up to three monitors
- Compatible with M/Connect 2 and M/Power, the first-ever integrated monitor arm bases and docking stations of their kind



Integrated Docking Station: M/Connect 2

Specifications

Weight Capacity	<p>Standard Single or Dual Monitors 2.3 - 7 kg (5 - 15.5 lbs.)</p>  <p>M2.1</p>
	<p>Heavy Single or Dual Monitors 2.7 - 12.7 kg (6 - 28 lbs.)</p>  <p>M8.1</p>
	<p>Up to Three Monitors and Large TV Formats 9 - 21.8 kg (20 - 48 lbs.)</p>  <p>M10</p>
Height Adjustment	Up to 305mm (12")
Colour Options	Polished Aluminium with White Trim Silver with Grey Trim Black with Black Trim
Warranty	M2.1, M8.1 and M10: 10 year



Environmental Story

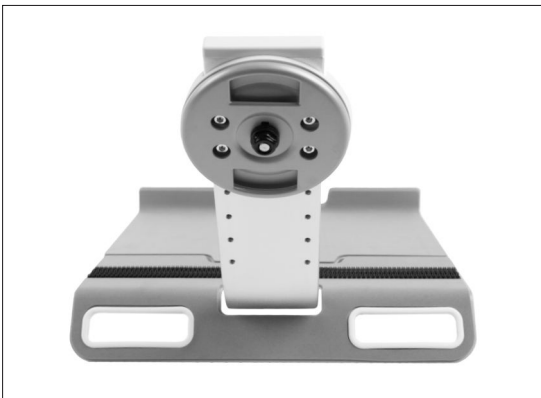
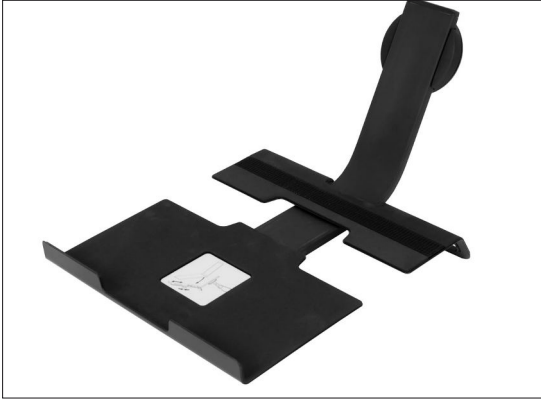
Humanscale's line of expertly engineered monitor arms ship unassembled to dramatically reduce packaging size – while still being quickest to install. Modular links allow users to design the most productive space without additional parts, which saves resources. This means that Humanscale monitor arms require far less energy, resources and processes to get from factory to office. We consider the impact of our products on people both during manufacturing and when they are in use. Humanscale monitor arms are built with sustainable, non-toxic materials, and their durable design ensures that they won't need to be replaced for many years.

NH1 notebook holder for M2.1 / M8.1 / M10



Laptops are widely used, yet generally do not encourage ergonomic posture, often creating what's known as "laptop hunch." Ergonomics leader Humanscale has now developed an innovative tool that allows people to work on their laptops in a healthy posture while clearing valuable desk space.

Humanscale's Notebook Holder, which extends from any one of our award-winning monitor arms such as the M2.1, the M8.1 and M10, allows users to position the laptop with the top of the screen at eye level while using a keyboard support to hold an external keyboard—bringing the work to the user and encouraging an ergonomic posture.



Features & Specifications

- Front (adjustable) and rear (fixed) platforms support a range of laptops and docking stations, with a total length accommodation of 9" - 14" (230 - 355 mm)
- Multiple mounting holes on the vertical mount allow users to adjust the location of the VESA connector and align the laptop screen with neighboring monitors
- Holder supports up to 17 lbs. (7.71 kg) using the M2.1 and up to 20 lbs. (9.07 kg) using the M8.1 and M10
- Velcro strip provided to secure docking station to rear platform
- Cable management grommets keep cables of varying sizes neatly organized and allow for fast, easy transitions on the go
- Adjustment knob on the bottom of the holder allows for easy laptop size adjustment
- Front cut-out offers easy access to indicator lights, ports and cables
- Open top allows contact with "hot keys" and ports
- Soft foam on the platforms protects laptop from becoming scratched
- Available in black / silver / white
- 10-year warranty

Environmental Information

The Notebook Holder contributes to valuable LEED-CI, -EB, -HC, -NC and LEED for Retail credits.

Materials Used

The Notebook Holder is composed of aluminum, steel, ABS plastic, Velcro, and foam padding.