

freedom[®]

Designed by Niels Diffrient.
Made by Humanscale.





A true design icon, the Freedom chair proves that ergonomics can be beautiful. Created by Niels Diffrient, Freedom automatically adjusts to every user. Designed to eliminate the need for manual controls, it features a sophisticated weight-sensitive, self-locking recline mechanism. And its unique form has a timeless aesthetic that complements any workspace.

Features

Available in two versions, the everyday Freedom Task and the executive Freedom Headrest, each chair includes the following features:

- Distinctive design sets it apart from other task chairs and enhances any space
- Innovative weight-sensitive, self-locking recline mechanism cleverly uses each sitter's body weight to perfectly adjust the tension and recline position of the chair for full support throughout movement
- Pivoting backrest automatically moves with the user throughout the day and offers perfect lumbar comfort in all positions
- Synchronous arms allow effortless adjustment with one hand and our unique arm design attaches to the backrest to move with the user
- Contoured cushions are sculpted to closely follow the body's shape and offer long-term comfort, reduce pressure points and provide exceptional weight distribution
- Modular design allows the user to update the aesthetic of the chair and offers easy maintenance
- A wide range of specifically created, high-performance textiles complement the chair's unique cushion contours to maximise their comfort, performance and ergonomic function
- The Freedom Headrest features a dynamic support that cradles the head and neck during recline, but remains neutral when in upright positions



Niels Diffrient and the Freedom Chair

As the pioneer of ergonomics, Niels Diffrient aimed to redefine the concept of the traditional task chair and instead design seating solutions that efficiently adapt to users, allowing them to move freely from posture to posture. Diffrient's unique approach removed complexities found in other chairs, such as cumbersome recline levers and back tension dials. He realised that movement during recline took pressure off the user's body, and transferred it to the back of the chair. As a result, he developed the weight-sensitive, self-locking recline mechanism, definitively reinventing the features of modern task seating to be truly simple, beautiful and functional.



Standard Freedom Task

**Standard cylinder, synchronous arms,
standard cushions, hard casters**

- Designed to fit 95% of the office population, 152 - 193 cm (5'0" - 6'4") height, 45.4 - 136 kg (100 - 300 lbs.) weight
- Weight-sensitive, self-locking recline mechanism with 20 degrees of movement
- Automatically pivoting backrest with seven-degree back tilt
- Synchronous arms attach to the back frame with 150mm (6") vertical adjustment, adjusting seat level for up close work at a desk
- Arm length is 330mm (13") with 510mm (20") distance between each synchronous arm
- Contoured cushions with waterfall edge and coccyx cutout reduce pressure on lumbar and thoracic spine
- Modular design
- Handle on back of chair for easy manoeuvring
- 15-year warranty
- Dimensions: W: 690mm (27.25") x D: 415 - 470 mm (16.25" - 18.5") x H: 850 - 1055 mm (33.5" - 41.5")
- Weight: 19.5kg (42.9 lbs.)

Standard Freedom Headrest

**Standard cylinder, synchronous arms,
standard cushions, hard casters**

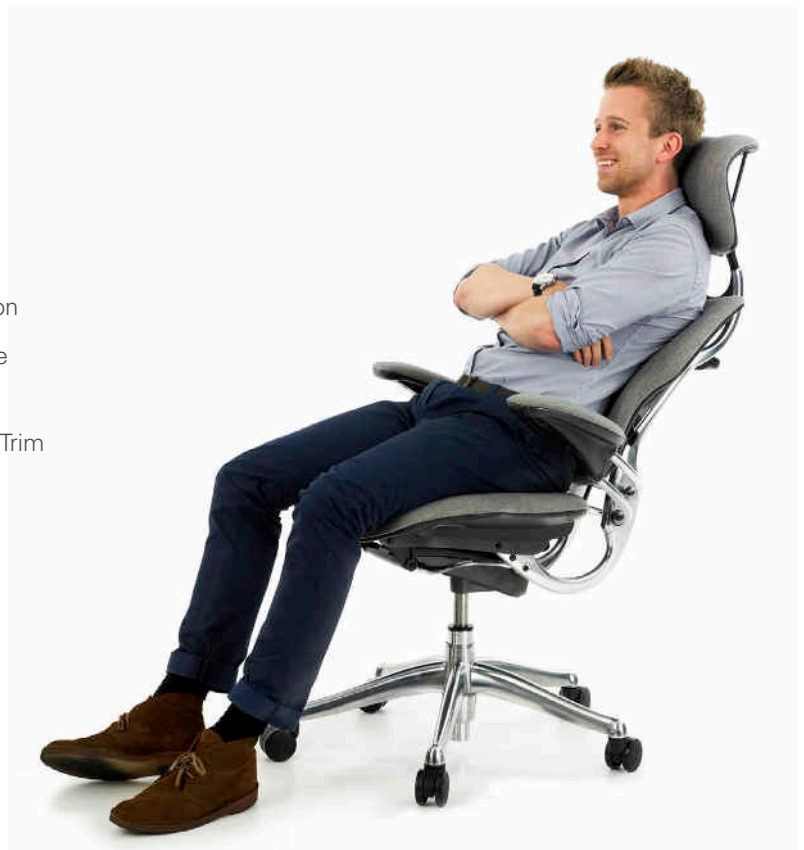
All the features of the Freedom Task, plus:

- Dynamic headrest with 125mm (5") vertical adjustment
- Dimensions: W: 690mm (27.25") x D: 415 - 470 mm (16.25" - 18.5") x H: 1090 - 1345 mm (43" - 53")
- Weight: 22.3kg (49.1 lbs.)



Available Options:

- **Textiles:** Range of four-way stretch fabrics, box-stitched leathers, antimicrobial textiles and non-stretch materials
- **Stitch finishing:** Choice of matching or contrasting box stitching is available with all leathers
- **Cushions:** Technogel cushions maximise weight distribution
- **Arms:** - Synchronous arms in duron, gel or matching textile
- Advanced arms in duron, gel or matching textile
- **Finishes:** Graphite or Polished Aluminium with Graphite Trim
- **Cylinder:** Low, Standard or High with footring
- **Casters:** Soft casters, glides or locking casters (lock when you sit down)
- Convenient coat hanger attachment
- CAL133
- Also available in a clean room compliant configuration



The Freedom Chair and the Environment

Like all Humanscale products, the Freedom chair was designed with a constant and genuine focus on its environmental impact at every stage of its development. For us, the best designs in the world achieve more with less, and sustainability is the natural result of this focus.

The Freedom chair's lightweight design minimises the environmental impact of its shipping, and its simple, modular design makes it easy to disassemble, recycle and maintain rather than replace the chair completely. The Freedom chair is GREENGUARD Indoor Air Quality, GREENGUARD Gold and level® 2 certified.



Available Colors

Humanscale offers two collections of premium, chrome-free leathers — Ticino and Corvara. Both collections are dyed with a surface coating to enhance durability and provide the highest level of performance and quality.

Because leather is a natural product, its surface changes with progressive wear – especially with lighter colors. By using a Surface Protection System (SPS) on our lighter colors of leather, they are more durable, easy to clean and less sensitive to stains.

Ticino

Ticino is a semi-aniline dyed leather available in a variety of rich colors inspired by nature. This top corrected grain leather was created to provide a more natural aesthetic while ensuring the leather remains as unique as the hide itself.



Obsidian TL10

Matching Stitch:
N - Noir
Contrast Stitch:
B - Blue, R - Red,
V - Vanilla

Umber TL21

Matching Stitch:
A - Cocoa

Charcoal TL12

Matching Stitch:
M - Midnight
Contrast Stitch:
Y - Light Grey

Canyon TL22

Matching Stitch:
C - Coffee

Pebble TL11

Matching Stitch:
Y - Light Grey

Sand TL31

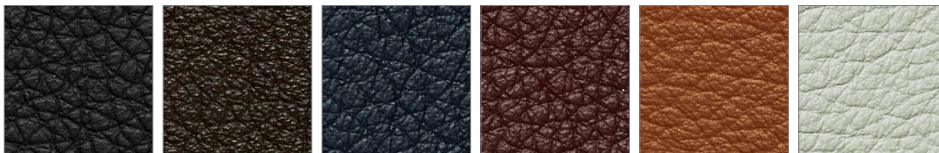
Matching Stitch:
V - Vanilla

Glacier TL13

Matching Stitch:
W - White

Corvara

Corvara is a semi-aniline dyed leather that offers a smooth, silky feel and ultimate durability. It is a top, full grain leather that is embossed lightly for a consistent, uniform grain structure.



Onyx CL10

Matching Stitch:
N - Noir
Contrast Stitch:
B - Blue, R - Red,
V - Vanilla

Java CL21

Matching Stitch:
A - Cocoa

Midnight CL57

Matching Stitch:
N - Noir
Contrast Stitch:
Y - Light Grey

Jasper CL71

Matching Stitch:
H - Cherry

Saddle CL23

Matching Stitch:
T - Tan

Mineral CL11

Matching Stitch:
V - Vanilla

Stitch Color Options*



Matching Stitch Example



Corvara Midnight with Noir stitching

Contrast Stitch Example



Corvara Midnight with Light Grey stitching

**Printed colors shown may not perfectly match actual leather or stitch colors. Please review a leather swatch or stitch sample before placing an order.*