



Highlights

- Articulating arms feature full tilt/pan capability and height adjustment, providing premium ergonomic adjustment
- **LX Sit-Stand:** Extends LCD up to 33" (84 cm); keyboard extends up to 42" (107 cm); push your display and keyboard out of the way when not in use
LX: Extends LCD up to 25" (64 cm); keyboard extends up to 35" (89 cm)
- **LX Sit-Stand:** Easily adjust height of components on Wall Track by loosening set-screws
- **LX Sit-Stand:** Secure installation – locking connections between arm, extension and base
- Ergonomic back-tilt keyboard tray ensures wrists remain in a neutral position during data entry – avoid repetitive-stress injuries while increasing comfort and productivity
- Creates a complete and compact workstation
- Effortlessly and independently position the LCD and keyboard to the most comfortable viewing and typing position, all while maintaining eye contact with your patient
- Save space – fold up the workstation tight against the wall when not in use
- Integrated cable management and cable channels organize and route cables out of the way
- Open design for future hardware upgrades



www.ergotron.com
© 2012 Ergotron, Inc.
All rights reserved

Ergotron®

LX Sit-Stand Wall Mount System LX Wall Mount System



Complete, compact wall-mount workstation

Durable polished aluminum construction!

Effortlessly and independently position the LCD and keyboard to the most comfortable viewing and typing position, all while maintaining eye contact with your patient. When not in use, simply push the system and fold it up tight against the wall.





- Convenient bifocal viewing: screen lowers and positions for optimized viewing by users with bifocal glasses
- Ideal for space-constrained rooms—
LX Sit-Stand: keyboard folds to within 6.8" (17,3 cm) of wall in storage position. LCD arm folds back to a depth of 5.5" (14 cm)
LX: keyboard folds to within 3.5" (9 cm) of wall in storage position. LCD arm folds back to a depth of 5.3" (13 cm)
- Monitor depth may affect weight capacity
- **LX Sit-Stand:** Medium CPU Holder size range 3 3/8" to 8" (9–20 cm) wide; CPUs down to 2" (5 cm) wide can be accommodated by installing the included CPU spacer within the holder; Small CPU Holder size range 1 3/8" to 3 3/4" (3,5–9,5 cm) wide
LX: Medium CPU Holder size range 2–8" (5–20 cm) wide; includes plastic spacer to accommodate most small form factor and ultra small form factor CPUs; Small CPU Holder size range 1 1/8" to 3 3/4" (3,5–9,5 cm) wide; accommodates most small form factor and ultra small form factor CPUs



| Sit-Stand LCD Size | Weight Capacity* | Lift | Tilt | Pan | Rotation | VESA** |
|--------------------|-----------------------------|--------------|---------|------|----------|-----------|
| ≤ 42" | ≤ 7–25 lbs ≤ 3,2–11,3 kg | 20" 51 cm | LCD 75° | 360° | 360° | MIS-D/E/F |

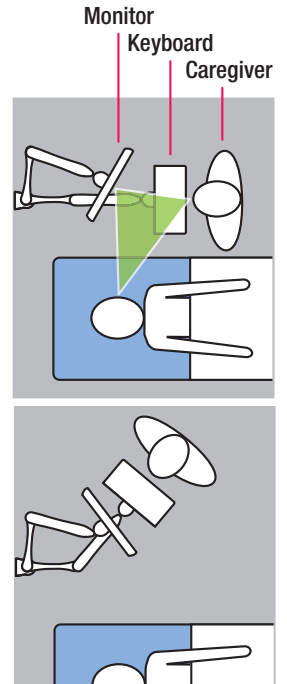
*Weight Capacity: display 7–20 lbs (3,2–9,1 kg); keyboard 5 lbs (2,2 kg); CPU 40 lbs (18 kg).
 Monitor depth may affect weight capacity

**VESA MIS-D, 75/100 (hole pattern = 100 x 100 mm & 75 x 75 mm), MIS-E (hole pattern = 200 x 100 mm), MIS-F (hole pattern = 200 x 200 mm ONLY). Optional VESA Bracket Adaptor Kit (97-759) can be ordered separately for MIS-F interface with hole pattern of 400 x 200 mm or 400 x 400 mm

| LCD Size | Weight Capacity* | Lift** | Tilt | Pan | Rotation | VESA |
|----------|----------------------|--------------|-------------------------|------|----------|-------|
| ≤ 24" | ≤ 20 lbs ≤ 9,1 kg | 13" 33 cm | LCD 75° Keyboard 80° | 360° | 90° P/L | MIS-D |

*Weight Capacity: display 7–20 lbs (3,2–9,1 kg); keyboard 5 lbs (2,2 kg); CPU 40 lbs (18 kg).
 Monitor depth may affect weight capacity

**Lift: display 13" (33 cm); keyboard 13" (33 cm)



| Product Name | LX Sit-Stand Wall Mount System | LX Wall Mount System |
|---------------------|--|---|
| Part Number | Medium CPU Holder 45-358-026 (silver) Small CPU Holder 45-359-026 (black) | Medium CPU Holder 45-247-026 (silver) Small CPU Holder 45-253-026 (black) |
| Product Includes | 10" and 34" (25,4 and 86,4 cm) Wall Tracks with (2) black track covers, LX Sit-Stand Wall Mount LCD Arm, LX Sit-Stand Keyboard Arm, wrist rest, mouse holder, CPU Holder, two (2) 10" (25,4 cm) cable channels, mounting kits for hollow-wall and wall-stud installation | 10" and 34" Wall Tracks with (2) black track covers, LX Wall Mount LCD Arm, LX Keyboard Arm, wrist rest, mouse holder, CPU Holder, two (2) 10" Cable Channels, mounting kits for hollow-wall and wall-stud installation |
| Shipping Dimensions | 36.4" x 22.3" x 6.8" (93 x 57 x 17 cm) | 37"H x 22"W x 7.5"D (94 x 56 x 19 cm) |
| Shipping Weight | 47.3 lbs (21,5 kg) | 40 lbs (18 kg) |
| Warranty | 5 years | 5 years |

© 2012 Ergotron, Inc. Made in US rev. 11/02/2012/EA Content is subject to change without notification

Americas Sales and Corporate Headquarters

St. Paul, MN USA
 (800) 888-8458
 +1-651-681-7600
 www.ergotron.com
 sales@ergotron.com

EMEA Sales

Amersfoort, The Netherlands
 +31 33 45 45 600
 www.ergotron.com
 info.eu@ergotron.com

APAC Sales

Tokyo, Japan
 www.ergotron.com
 apaccustomerservice@ergotron.com

Worldwide OEM Sales

www.ergotron.com
 info.oem@ergotron.com

