

ergotron®

moving you forward

HX Wall Monitor Arm with VHD Pivot

- Protect your investment: Combines a strong monitor arm and very heavy-duty tilt pivot to securely support large, curved monitors.
- Experience immersive viewing: Tilts +20/-5° to work or play comfortably, helping to reduce eye, back and neck strain.
- Compatible with ultra-wide monitors: Designed to support a 57" 1000R curved monitor, like the Samsung® Odyssey Neo G9 57".
- Reclaim your space: Replace bulky monitor bases and lift screens above the desktop. Cables stay hidden and out-of-the-way under the arm and through the extension.
- Enables precise screen positioning and display adjustments with a light touch, thanks to Constant Force™ technology.
- Passes Ergotron's 10,000-cycle motion test for years of trouble-free height adjustment.



DESIGNED FOR ULTRAWIDE DISPLAYS AND CURVED GAMING MONITORS



Enable immersive viewing experiences with the HX Wall Monitor Arm with VHD Pivot, giving gamers and office professionals the freedom to move and position ultra-wide curved displays like the Samsung® Odyssey Neo G9 57". gaming monitor. Bring flexibility and superior ergonomics to large monitor setups with this safe and secure wall mount.

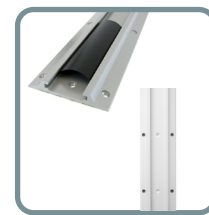
HX Wall Monitor Arm with VHD Pivot



CABLES ROUTE BENEATH THE ARM, OUT OF THE WAY



WALL MOUNT WITH INCLUDED HARDWARE FOR SOLID WALL MOUNTING



WALL TRACK AND TRACK MOUNT BRACKET NEED TO BE PURCHASED SEPARATELY FOR WOOD OR METAL STUD MOUNTING

Part number

31-016-182 ; 97-091

HX Wall Monitor Arm with VHD Pivot

Part # color	45-694-216 white (worldwide)
Includes	HX Arm, Very Heavy-Duty Tilt Pivot, extension, wall mount attachment, mounting hardware
Typical LCD Size	≤ 57"
<small>LCD SIZE IS APPROXIMATION. DIMENSION IS DIAGONAL MEASUREMENT OF SCREEN.</small>	
Weight Capacity	Ultra-wide, 1000R curved display 9.1" - 13.8" (23.1 - 35.1 cm) deep and weighing 28.7 - 37.5 lbs (13 - 17 kg), like the Samsung® Odyssey Neo G9 57" Gaming Monitor
Lift	11.5" (29.2 cm)
Tilt	+ 20° / - 5°
Monitor Pan	180°
Base Arm Pan	180°
Monitor Rotation	+/- 10°
VESA	MIS-D
Extension	≤ 25" (60 cm)
Shipping Weight	17.2 lbs (7.8 kg)
Shipping Dimensions	18.9" x 10.4" x 7.8" (48 x 26.5 x 19.8 cm)
Warranty	10 years
Pro Install Option	SRVC-SPI-1

Download additional resources at ergotron.com.

For more information:

USA & Canada: 800.888.8458 / +1.651.681.7600 / customerservice@ergotron.com

EMEA: +31.33.45.45.600 / info.eu@ergotron.com

APAC: apaccustomerservice@ergotron.com

Custom: oemsales@ergotron.com

© Ergotron, Inc. 09.02.2024

Content subject to change.

Ergotron devices are not intended to cure, treat, mitigate or prevent any disease.

Patent information available at www.ergotron.com/patents.

