

Q-doc 100 Special

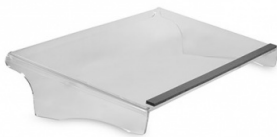
Indispensable to permanent workstations

 BAKKER ELKHUIZEN

Work Smart - Feel Good

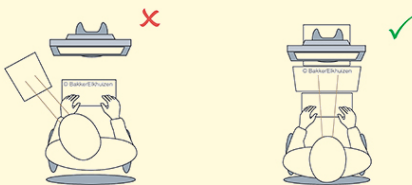


Work in line and prevent neck pain.



You place the Q-doc 100 Special document holder between your screen and keyboard. That prevents unnatural head and neck movement.

There is less strain on your body because you work in a single line with the keyboard, document holder and screen.



To prevent neck rotation, documents should be placed between the keyboard and display screen. A sloping work surface reduces flexion of the neck and thus increases work comfort. An 'in-line' document holder provides a functional work surface and short viewing distances between the document, screen and keyboard. The result is increased productivity.

[Read more online](#)

Ergonomic: reduces neck and eye strain and prevents neck pain and headaches.

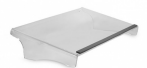
Efficient: short viewing distances between document, screen and keyboard.

Suitable for: books of all thicknesses and heavy files.

Fixed: A fixed and optimised viewing angle of 30 degrees.

Clean-Desk: you can stow a full-sized keyboard under the Q-doc 100 Special.

Material: high-quality clear acrylate. Using acrylate creates a stable surface for heavy binders.



Width	505 mm
Height	100 mm
Depth	285 mm
Weight	1.0 kg
Product code	BNEQDOC100SP