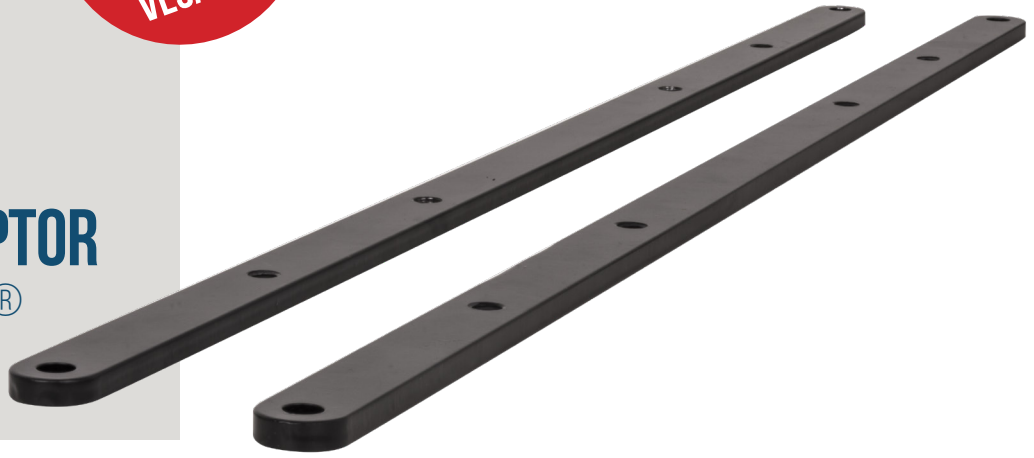


INCREASE MOUNTING PATTERNS TO VESA 600

BT7564

INTERFACE ADAPTOR ARMS FOR VESA®

600 X 400



Designed to increase the VESA mounting pattern of smaller mounts to accommodate larger screens, the BT7564 allows VESA 200 or 400 fixings to be increased to VESA 600. These adaptor arms are ultra-slim to keep the depth of the install to a minimum and can be used with a large variety of existing B-Tech products, such as the BT8431, BT8441 flat screen mounts and System X interface arms. All mounting hardware included.

SPECIFICATION

VESA® compatibility	600mm
Max load	dependent on mount to which the BT7564 is attached
Depth increase to the install	6mm
Colour	Black

FEATURES

- Allows VESA 200 or 400 fixings to be increased to VESA 600
- Can be used for both landscape and portrait installations
- Adaptor arms are ultra-slim to keep the depth of the install to a minimum
- Can be used with a large variety of B-Tech products such as the BT8431, BT8441 and System X™ Interface Arms
- Easily fixes onto interface plates / arms using the screws provided
- TUV certified



Can be used to accommodate both landscape and portrait installations



Adaptor arms are ultra-slim to keep the depth of the install to a minimum



Can be used with a large variety of existing B-Tech products such as the BT8431, BT8441 and System X™ Interface Arms



Easily fixes onto interface plates / arms using the screws provided

