

**DS-C560-1X3** SmartMount® Portable Video Wall Cart 1x3 Configuration for 46" to 60" Displays

**Product Specifications**

	DIMENSIONS (W x H x D)	PRODUCT WEIGHT	LOAD CAPACITY	FINISH	AVAILABLE COLORS
<b>DS-C560-1X3</b>	40.29" x 102.49" x 36.05" (1023 x 2603 x 916mm)	TBD	375lb (170kg) 125lb per display	Powder Coat	Black

**Package Specifications**

	PACKAGE SIZE (W x H x D)	PACKAGE SHIP WEIGHT	PACKAGE UPC CODE	PACKAGE CONTENTS	UNITS IN PACKAGE
<b>DS-C560-1X3</b>	84.00" x 37.50" x 12.50" (2133 x 952 x 317mm)	TBD	735029308461	Stand, casters, display adaptors and hardware	1

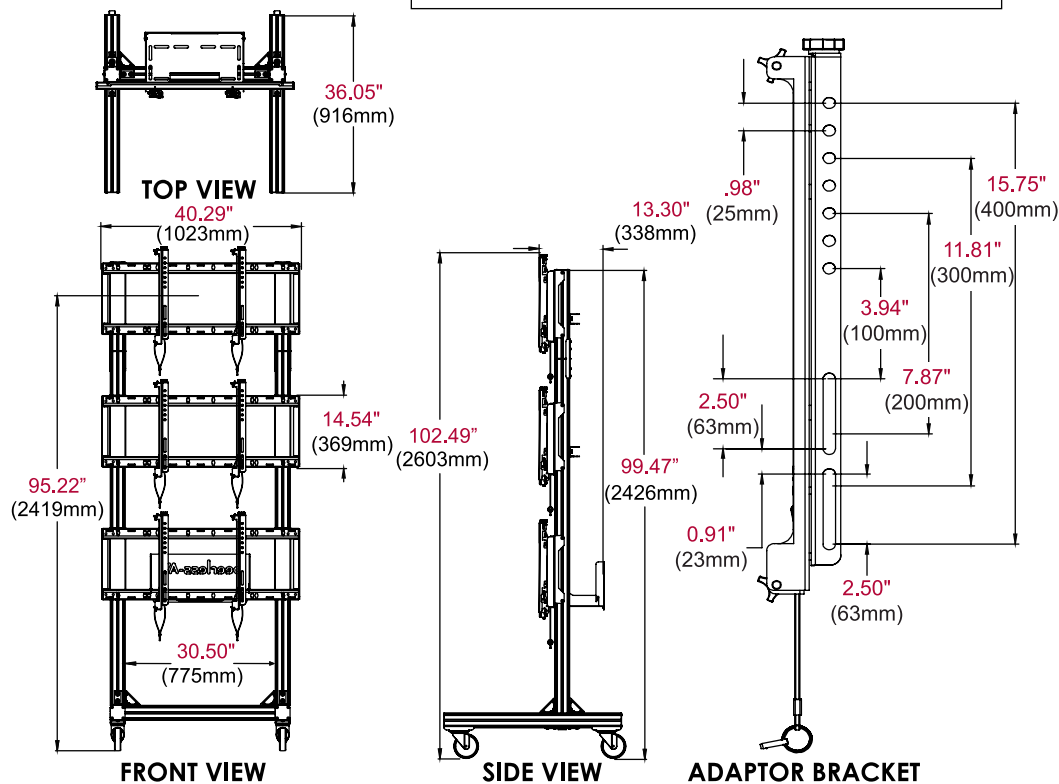
**Accessories**

- ACC-V800X:** Adaptor accessory for 600 x 400 and 800 x 400mm mounting patterns
- ACC310VVC4:** Video wall cart accessory feet - 4pk

**COMPATIBILITY FORMULA**

Display width ≥ 40.29"    Display Height ≤ 31.0"

All dimensions = inch (mm)



**Architect Specifications**

The Smartmount® Portable Video Wall Cart 1x3 Configuration shall be a Peerless-AV model **DS-C560-1X3** and shall be located where indicated on the plans. Assembly and installation shall be done according to instructions provided by the manufacturer.

Visit [peerless-av.com](http://peerless-av.com) to see the complete line of AV solutions from Peerless-AV, including outdoor displays, wireless, kiosks, digital audio, display mounts, projector mounts, carts/stands, and a full assortment of accessories.

**Peerless-AV**  
2300 White Oak Circle  
Aurora, IL 60502 USA  
**(800) 865-2112**  
**(630) 375-5100**  
Fax: **(800) 359-6500**

**Peerless-AV Europe**  
Unit 3 Watford Interchange  
Colonial Way, Watford  
Herts, WD24 4WP  
United Kingdom  
**+44 (0) 1923 200100**  
Fax: **+44 (0) 1923 200101**

**Peerless-AV de México**  
Ave de las Industrias 413  
Parque Industrial Escobedo  
Escobedo, N.L.,  
Mexico 66050  
**+52 (81) 8384-8300**  
Fax: **+52 (81) 8384-8360**

