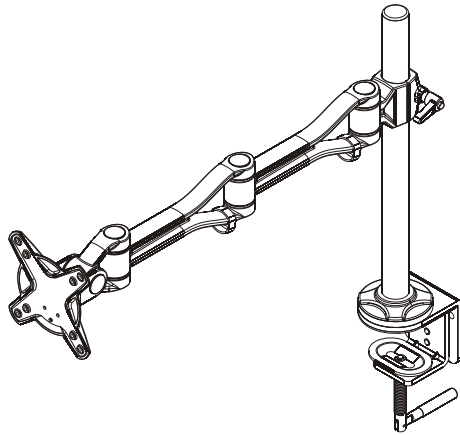


NewStar user's Manual

LCD Monitor Arm
 FPMA-D1010.FPMA-D1020.FPMA-D1030

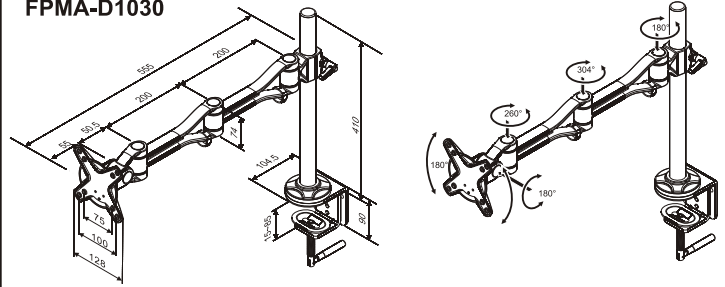


NEWSTAR
 computerproducts

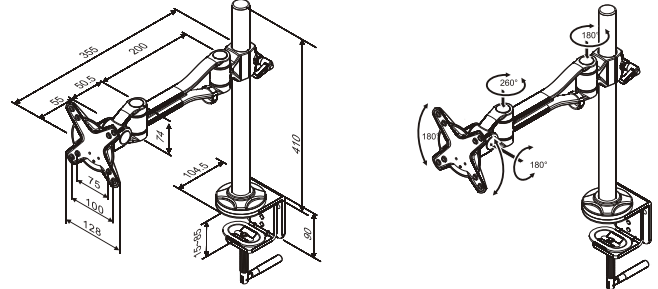
www.NewStar.nl
 Phone: + 31 (0) 23 547 88 88

LCD Monitor Arm

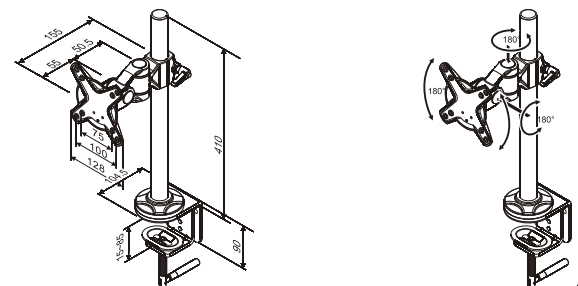
LCD Monitor Arm Range of use angle:
 FPMA-D1030



FPMA-D1020



FPMA-D1010



Unit : mm

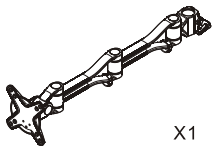
Check-List

01

To mount your flat panel monitor or any parts at an ergonomically correct position, start at step 1 and continue as directed.

Part Check-List

① FPMA-D1030



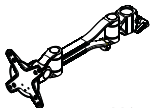
X1

① FPMA-D1010



X1

① FPMA-D1020



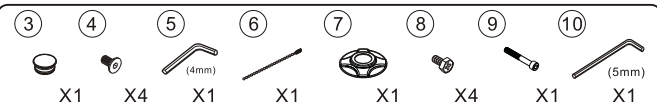
X1

②

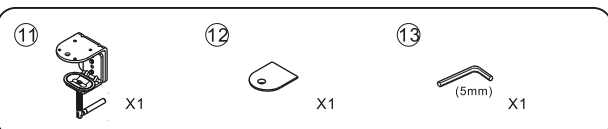


X1

Fitting/Tools Check-List



Clamp Check-List

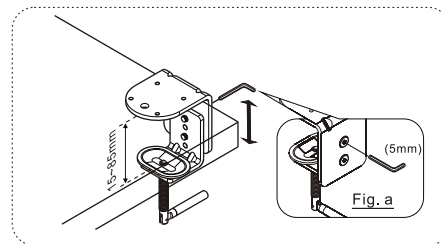
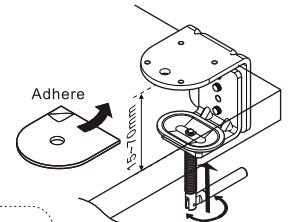


Assembly Guide

02

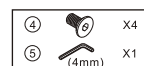
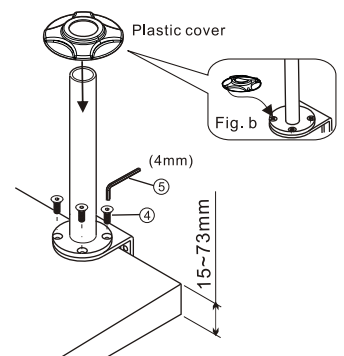
Step 1 "Clamp" assembly step

Adhere the pad to the clamp base. Desk thickness from 15mm~70mm. Then fix the clamp on the desk. If desk thickness over 70mm, please adjust screws with 5mm Allen Key. (as figure a.)



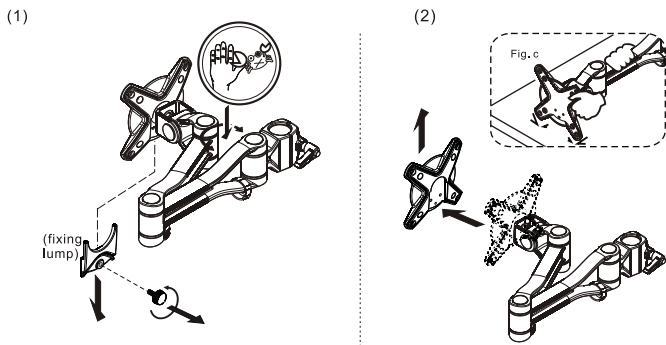
Step 2 "Pole" assembly step

Fix the clamp on the desk, use 4mm Allen key to secure the pole and clamp with 4 screws. Then put the plastic cover through the pole and check the pin position with the screw together. (as figure b.)



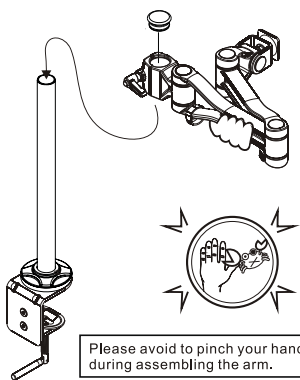
Step 3

- (1) Please loosen the knob at first, and then apart the fixing lump.
- (2) Then, take VESA up. If it is difficult to take it up, you can take it by knocking slightly (as figure. C).



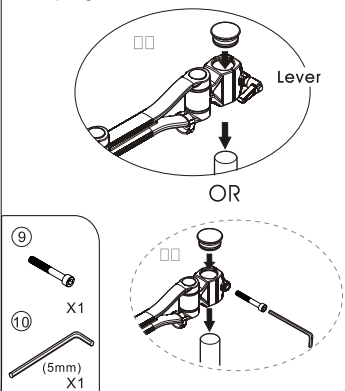
Step 4

Insert the arm into the pole. Adjust the level of high to the most comfortable view.



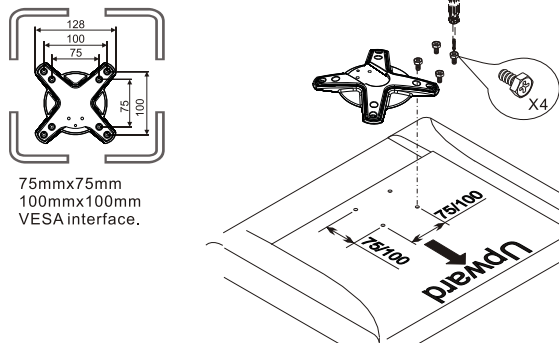
Step 5

Use the lever to tighten the arm (as figure D.) or secure it with one screw (as figure E.) and then put in the plug.



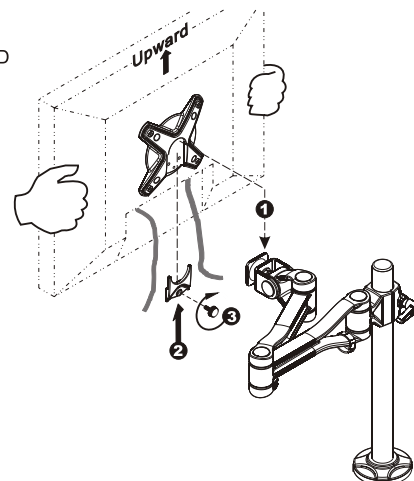
Step 6

Place LCD with facing downward on flat surface. Place VESA on the LCD back as figure and align to the screw holes. Secure them together with four screws. And then tighten them up with screwdriver (not provided).

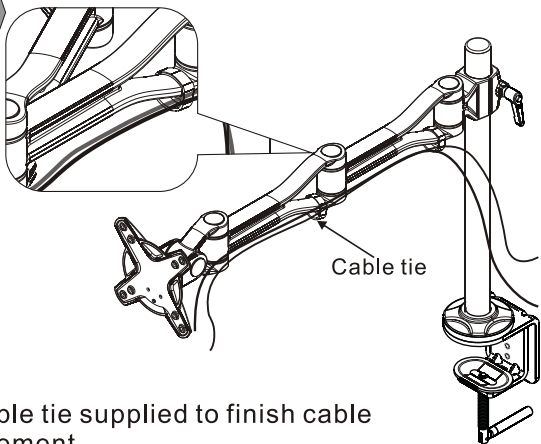


Step 7

Insert the VESA (with LCD already) into the arm and press it down. Then secure fixing lump on VESA with knob (as figure down step 1. 2. 3)



Step 8



Use cable tie supplied to finish cable management.

Step 9

When the screw is loose, please use the Allen Key (5mm) to tighten the arm.

