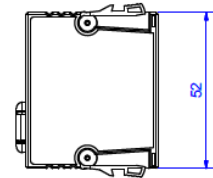
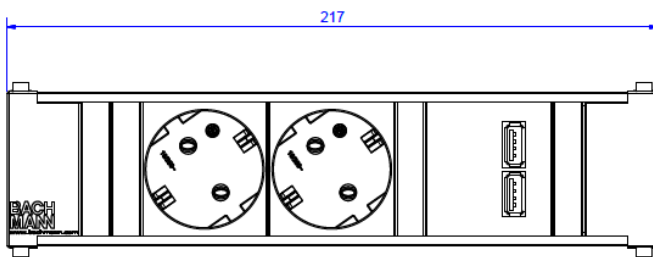
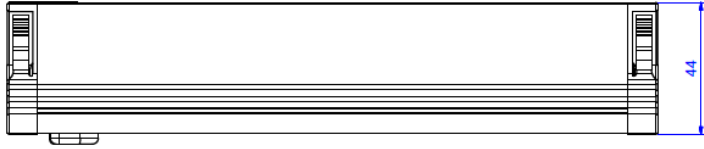


Skizze / Bild



| | |
|---|--|
| Coni 2xSchuko 1xUSB Doppelcharger mit 0,10m H05VV-F3G1,5mm² mit GST18i3 Steckverbinder | Coni 2xSchuko 1xdouble charger with 0,10m H05VV-F3G1,5mm² with GST18i3 connector |
| Steckdosen: <ul style="list-style-type: none"> Nach IEC 60884, VDE 0620-1 2-polig mit Schutzkontakt, mit Kinderschutz 16A/3680W, AC250V, IP20, 35° schwarz | Sockets: <ul style="list-style-type: none"> According IEC 60884, VDE 0620-1 2-pole with earthing contact, incl. child protection 16A/3680W, AC250V, IP20, 35° Black |
| USB Charger: <ul style="list-style-type: none"> 5,2V/2,15A Doppelcharger | USB Charger: <ul style="list-style-type: none"> 5,2V/2,15A Double charger |
| Anschluss: <ul style="list-style-type: none"> Stromeingang 0,10m H05VV-F3G1,5mm² Leitung (halogenfrei) und GST18i3 Steckverbinder | Connection: <ul style="list-style-type: none"> Power input 0,1m H05VV-F3G1,5mm² (halogene free) and GST18i3 plug |
| Profil: <ul style="list-style-type: none"> ALU eloxiert | Profile: <ul style="list-style-type: none"> Aluminum anodized |
| Kunststoff: <ul style="list-style-type: none"> PA 6 GF, schwarz, Glühdrahtprüfung bis 850°C | Plastic material: <ul style="list-style-type: none"> PA 6 GF, black, glow wire resistant up to 850°C |
| Endkappen: <ul style="list-style-type: none"> Genietet, nicht wiederanschließbar | Endcaps: <ul style="list-style-type: none"> With rivets, non rewirable |
| Abmessungen (Länge x Breite x Höhe) in mm: <ul style="list-style-type: none"> Gemäß Zeichnung | Measurements (length x width x height): <ul style="list-style-type: none"> According to drawing |
| Lieferform: <ul style="list-style-type: none"> Im Polybeutel verpackt | Packing: <ul style="list-style-type: none"> In polybag |
| Lieferumfang: <ul style="list-style-type: none"> 1x Steckdoseneinheit Coni | Extent of delivery: <ul style="list-style-type: none"> 1x PDU CONI |