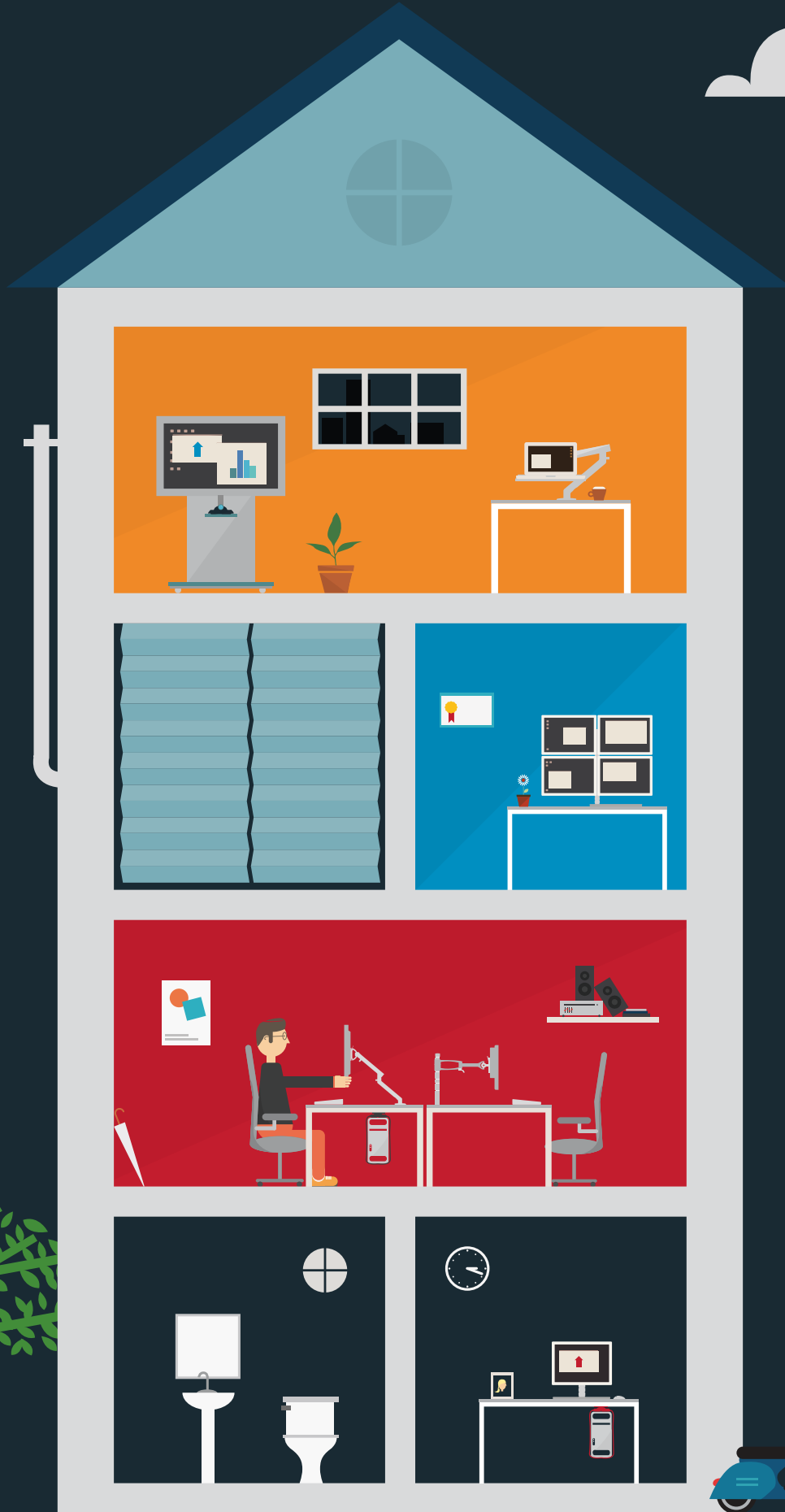


# Product Catalogue



BROUGHT TO YOU WITH



FROM EVERYBODY AT  
COLEBROOK BOSSON SAUNDERS

## CONTENTS

### ABOUT COLEBROOK BOSSON SAUNDERS 3 - 6

Background	3
Awards	4
CBS Headquarters	5-6

### WE BELIEVE PASSIONATELY IN DESIGN 7 - 8

Product Timeline	7 - 8
------------------	-------

### A GLOBAL REACH 9 - 10

Worldwide network	9 - 10
-------------------	--------

### WE DESIGN SO YOU DON'T HAVE TO 11 - 12

Custom solutions	11
How we work with a client	11

### WHAT 'WORKER STYLE' ARE YOU? 13 - 14

Fixed worker	13
Hybrid worker	13
Mobile worker	14
Multi-screen worker	14

### MONITOR ARMS 15 - 40

<i>It's your technology, your worker style</i>	17 - 18
<i>Look after your head</i>	19 - 20
Flo	21 - 22
Flo Plus Single	23 - 24
Rodney	25 - 26
<i>Increase productivity using dual and multiple screens</i>	27 - 28
Flo Plus Dual	29 - 30
Flo Dual	31 - 32
Daisyone	33 - 34
<i>VTB Bank: A Multi-screen case study</i>	35 - 36
Wishbone	37 - 38
Wishbone Plus	39 - 40

### FURNITURE FIXINGS 41 - 50

<i>Wishbone post inspiration</i>	43 - 44
Posts and Clamps	45 - 46
Wall and Slatwall Mounting	47 - 48
Dual Screen Mounting	49 - 50

### MOBILE WORKING 51 - 60

CBS Laptop Stand	53 - 54
Laptop Mount	55 - 56
<i>Laurie Yu: A Homeworking case study</i>	57 - 58
Tablet Mount	59 - 60

### CPU SUPPORTS 61 - 72

Loop	63 - 64
<i>Glasgow City Council: An Office case study</i>	65 - 66
Jaw	67 - 68
Thin Client	69 - 70
CPU Fixings	71
ADDB Mobile	72

### WORKSTATION ORGANISATION 73 - 78

Slinky	75 - 76
Toolbar	77 - 78
<i>BA Heathrow Terminal 5: A Passenger terminal case study</i>	79 - 80

### AV/VC MOUNTS 81 - 90

AVALL Complete	83 - 84
AVALL Standard	85 - 86
<i>HSBC/TATE Modern: A Retail case study</i>	87 - 88
CBS VCALL	89 - 90
CBS Orgatec Stand	91 - 92

### HEALTHCARE 93 - 96

CBS Hi1	95 - 96
---------	---------

Colebrook Bosson Saunders (CBS) was founded in 1990, drawing upon the skills of architecture and product design to create new and unique solutions to the technology and furniture interface within the working environment.



#### ABOUT CBS

CBS' approach to workplace ergonomics has heavily influenced how people sit and work with computers to this day. And by designing innovative solutions that create a spacious and healthy working environment, people of all ages, shapes, and sizes have been able to work in productive environments designed around their needs.

CBS has a history of being first. From creating the world's very first monitor arm (Gemini in 1985) when the company was simply Bosson Saunders, to the world's original monitor arm design for flat screen usage, the award-winning

and iconic 'Wishbone.' It is this commitment to innovation and excellence that has ensured we have supplied some of the most prestigious and high profile organisations in the world.

Our mission is to create market leading ergonomic solutions for human interaction with technology. This will help to facilitate healthy working practices and improved performance for users of technology products.

#### AWARDS



reddot design award  
winner 2011



mixology  
Best Designers Award 2006



reddot design award  
product design 2009

The CBS corporate HQ is a five storey listed building located in London's historic Borough Market area.

While grand from the outside it also has a fully functioning workshop and design studio located to the rear, along with a showroom, bar, and roof terrace! It's this mix of old and new space, interspersed with sociable and business-focused hubs that create the energy and ideas from which we thrive. You probably won't be surprised to hear that a Roman villa was excavated from the basement and now resides in the British Museum!



# We believe passionately in design

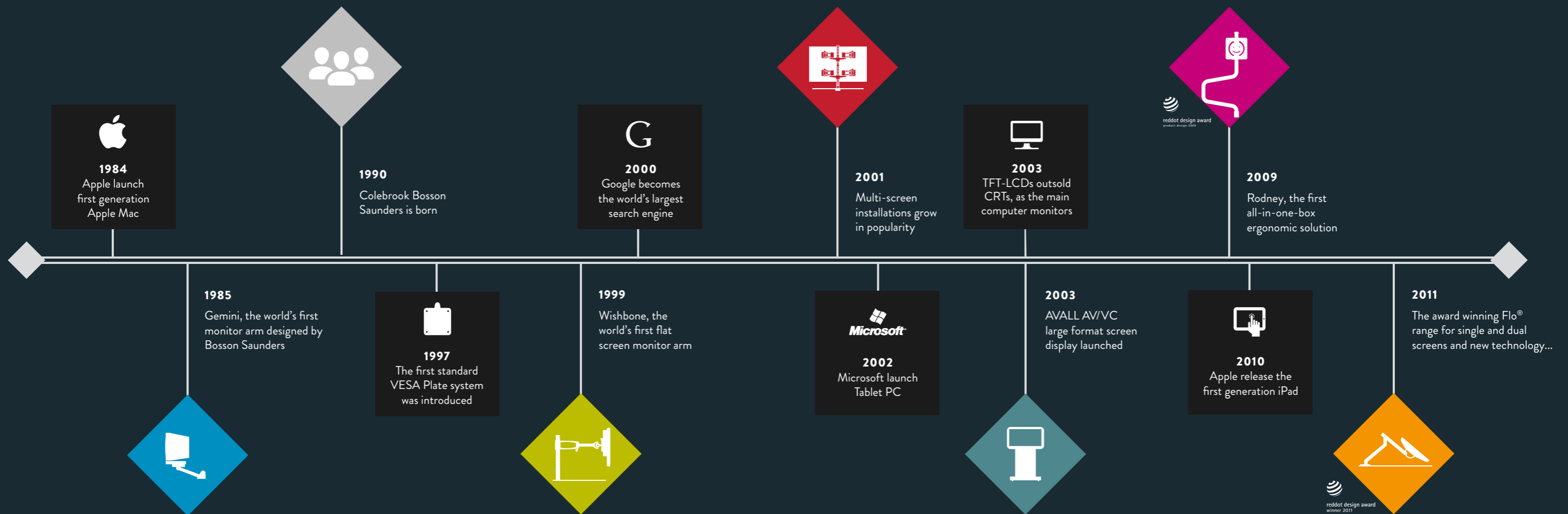
Designing the very best products is at the core of the CBS philosophy. And as technology develops at an increasing rate, so do the opportunities to create stylish and effective products that integrate the technology into people's lives and the environment.

CBS designed the world's very first flat screen monitor arm (Wishbone) and the design principles we applied then remain true to this day. Our approach to product design is based on the belief that it becomes an object based out of what it does and what it needs to do.

And we combine this principle with a clear commitment to design purity based on minimal usage of materials. By ensuring

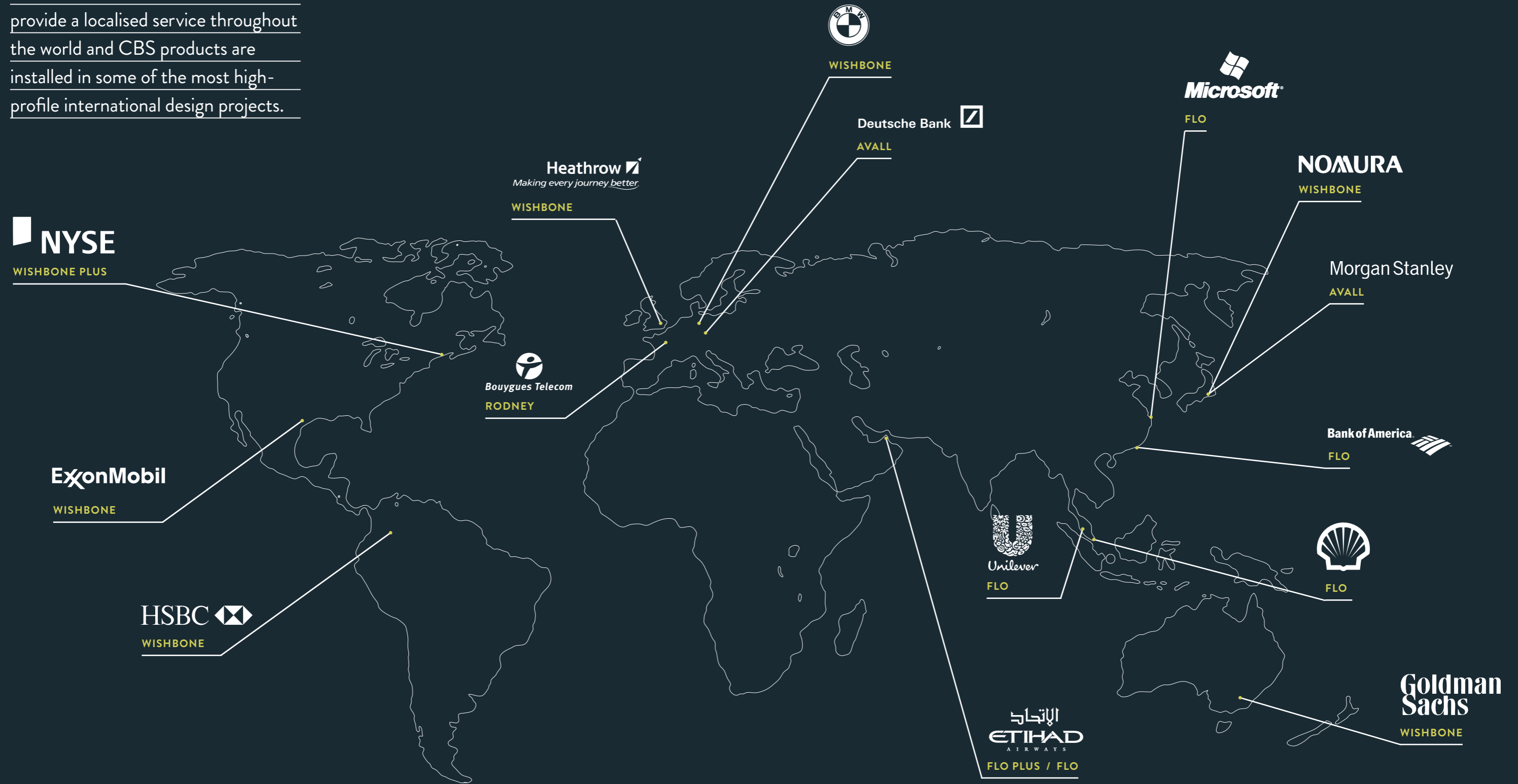
that function, commercial viability and aesthetics work in harmony, we are able to create market leading products.

Our in-house team of designers work in collaboration with high calibre engineers to continuously innovate and create new products. The Custom Solutions service that we can offer also ensures that we make these skills available to meet specific client requirements when appropriate.



# A global reach

CBS supports a worldwide network of manufacturers, dealers and distributors. This ensures that we provide a localised service throughout the world and CBS products are installed in some of the most high-profile international design projects.



We design so you don't have to.  
We have the skills, experience  
and initiative to provide bespoke  
design solutions to our clients  
when required.



#### CBS CUSTOM SOLUTIONS

As working practices change in line with new technology, in some cases our standard products and fixings don't fit our client's specifications, when this occurs we are able to design and customise new products to meet their brief.

In some cases these Custom Solutions can become part of the evolution of our products, adapting and innovating to meet marketplace developments.

Typically we provide Custom Solutions for our desk clamp fixings, attaching arms to the desk in a way that is more suitable. This can be replicated with fixings for attaching CPU units to the underside of a desk, and as additional attachments to our monitor arms, such as a bespoke laptop stand.

Our in-house design and account management teams work closely with the client to ensure that our Custom Solution adheres to the brief.

#### HOW WE WORK WITH A CLIENT

##### INITIAL MEETING

To begin with all requirements are evaluated by a CBS account manager who will provide a brief to our team of designers. Typically a custom solution requires a minimum order quantity of 10 units - excluding the first sample.

##### FEASIBILITY

To enable the custom solution to be designed a 3D CAD file of the furniture, or in some cases a sample, is required.

##### CONCEPT DESIGN, DETAIL DEVELOPMENT AND PRODUCTION

An account manager will then pass on information to our design team who will typically provide:

- Concept images
- First evaluation sample
- Production samples/order fulfilment



# What worker style are you?

Working practices are changing all the time. An increase in flexible and mobile working facilitated by technology innovation has ensured that people often work in a number of different locations with an assortment of work tools. This

creates a variety of worker styles, each with unique technology requirements required to perform their roles. It is our goal to ensure that we cater for these different worker styles by providing a range of ergonomic tools designed around their needs.

## FIXED WORKER

Works at an assigned desk more than six hours a day for four to five days each week.

The fixed worker benefits from having their ergonomic accessories permanently set to their individual requirements. And by ensuring that they are also adjustable, they can be altered throughout the day to compensate for light conditions and different task requirements.

### RECOMMENDED PRODUCTS

- Wishbone 37
- Daisyone 33
- Flo Family 21

## HYBRID WORKER

A hybrid worker works in the office four or five days per week, but only for three to five hours each day.

They have a need to be mobile around the workplace attending meetings or collaborating with colleagues. They may not have an assigned workspace so have a need to quickly setup their workspace to their requirements each day.

### RECOMMENDED PRODUCTS

- Flo Family 21
- Rodney 25
- Wishbone 37
- CBS Laptop Stand 53



## MOBILE WORKER

The mobile worker is typically on the move, working in one location just one to three days each week for just a few hours a day.

Often the mobile worker will not have an assigned workstation so they need their work tools to be able to ergonomically adjust to their individual requirements quickly and easily in multiple locations.

### RECOMMENDED PRODUCTS

- Flo with Laptop or Tablet Mount 55 59
- Flo Dual with Laptop or Tablet Mount 31
- CBS Laptop Stand 53

## MULTI-SCREEN WORKER

A high density worker works with a large amount of information in front of them.

Their requirements are focused around scaling the system to specific needs and the data that they are viewing. This can range from a trading desk to a control room. They have the need to change the number of screens, screen position, number of tiers and screen orientation to enable them to do their job to the best of their ability.

### RECOMMENDED PRODUCTS

- Wishbone 37
- Daisyone 33

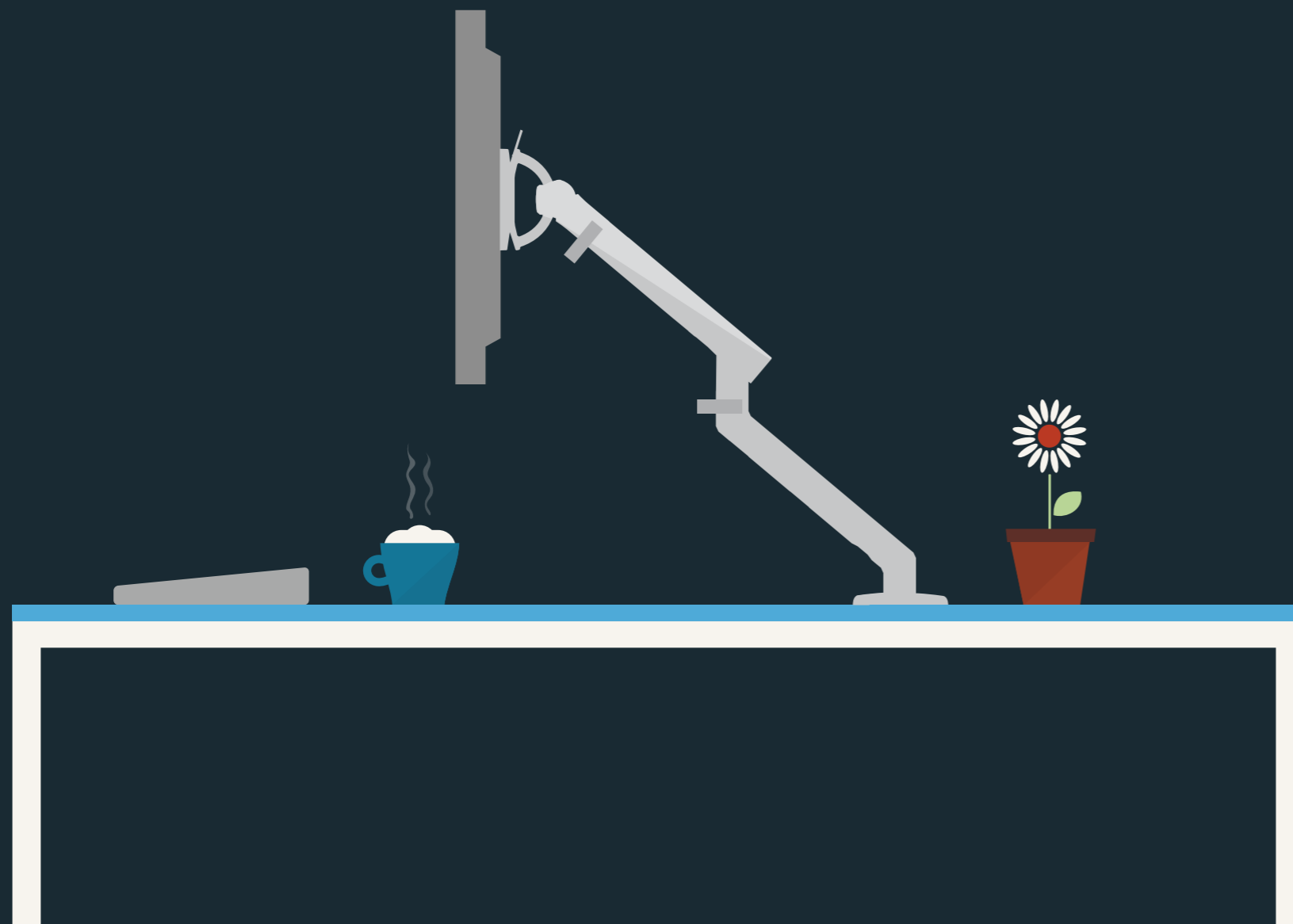


## Monitor Arms

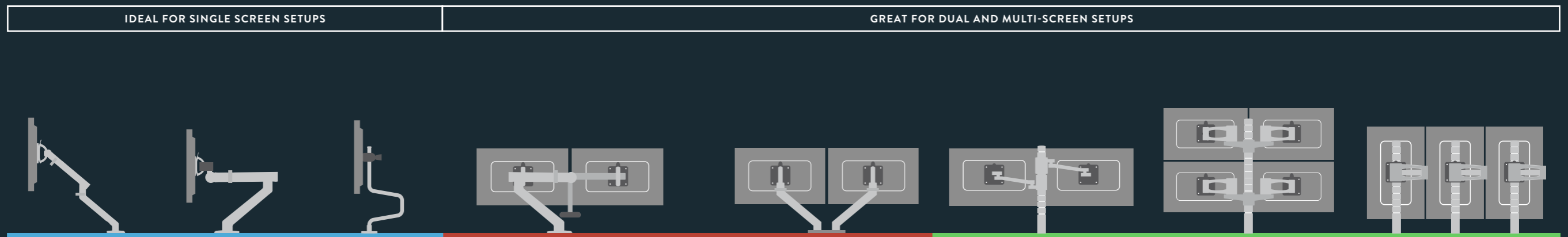
Technology continues to drive  
performance and therefore  
an ergonomically sound  
workspace is vital in creating  
a healthy and productive  
working environment where  
employees can work to their  
maximum ability.

Mounting monitors, laptops, and tablets at the correct height for individual users vastly improves posture and can prevent long-term MSDs and RSIs. CBS recognised the need for ergonomic office equipment and launched the market's very first monitor arm in the mid 1980s.

We were also the first company to design arms for flat screens, foreseeing the huge demand for LCD monitors. The CBS range now includes a wide variety of models and sizes, all designed with the user in mind. They can be mounted on posts, slatwalls, toolbars and, with the design of special brackets, almost any other surface.



It's your technology, your worker style and now your well-informed choice.



	FLO	FLO PLUS SINGLE	RODNEY	FLO PLUS DUAL	FLO DUAL	DAISYONE	WISHBONE	WISHBONE PLUS
SINGLE	◆	◆	◆	◆	◆	◆	◆	◆
DUAL	-	-	-	◆	◆	◆	◆	◆
TRIPLE	-	-	-	-	-	◆	◆	◆
QUAD	-	-	-	-	-	◆	◆	◆
VERTICAL ADJUSTMENT	341mm	330mm	160mm	331mm	341mm	-	-	-
HORIZONTAL ADJUSTMENT	458mm	587mm	430mm	591mm	458mm	505mm	415mm	437mm
MAXIMUM MONITOR WEIGHT	9kg / 19.8lbs	18kg / 39.7lbs	8.5kg / 18.7lbs	18kg / 39.7lbs	9kg / 19.8lbs per arm	8.5kg / 18.7lbs per arm	12kg / 26.4lbs	24kg / 52.8lbs
MINIMUM MONITOR WEIGHT	3kg / 6.6lbs	6kg / 13.2lbs	-	6kg / 13.2lbs	3kg / 6.6lbs per arm	-	-	-
COLOUR OPTIONS	Silver / White	White	Silver / White / Black	White	Silver / White	Silver / Black	Silver / Black	Silver / Black
ATTACHMENTS	Monitor / Tablet / Laptop	Monitor	Monitor	Monitor	Monitor / Tablet / Laptop	Monitor	Monitor	Monitor
PAGE	21 - 22	23 - 24	25 - 26	29 - 30	31 - 32	33 - 34	37 - 38	39 - 40

## Look after your head

It's a commonly known fact that vision drives posture and therefore if you are able to view the computer screen from a comfortable position then your posture will be improved. If you are not using a height adjustable monitor arm then you are likely to be occupying a workstation that is preventing you from positioning your body and head in a comfortable position.

If your posture is not correct because the screen is too far away or at the wrong height, then the chances are your head is effectively 'in space', supported only by the neck muscles and not the spine. This places tremendous strain on your neck, and creates long term health issues.

### DID YOU KNOW?

The human head weighs 4.5kg, the same as a standard bowling ball





Flo's unique design offers a range and ease of movement that sets it apart from all other monitor arms. Flo's primary purpose is to support a single screen/monitor but due to its ingenious design can be easily customised to support a laptop, tablet or thin client.

Flo has a number of features that are unique to its design. The visual indicator weight gauge on its forearm works in unison with a single point of adjustment to set the optimum spring tension for the screen weight, this significantly improves usability and delivers time reductions when working on multiple workstation installations. Other features include the patented D-ring head that produces an unrivalled range of tilt and rotation; three-point cable management; and portrait to landscape screen orientation.

**Product Code**

Flo Dynamic Arm  
DYN/013/010

Flo Split Clamp  
DYN/013/AS09

Flo Top Mount Clamp  
DYN/013/C25

Flo Through Desk Fixing  
DYN/013/AS11



MONITOR ARMS

**Suggested Screen Setups**



SINGLE SCREEN



LAPTOP MOUNT



THIN CLIENT MOUNT WITH SCREEN



TABLET MOUNT





Ideal for supporting large single screens on a desktop with a weight limit of up to 18kg, Flo Plus Single provides easy manoeuvrability to create an optimum viewing position.

Unlike most rival arms in its class, Flo Plus is able to use spring technology (as opposed to a gas strut) and is therefore the most environmentally-friendly and reliable product of its type.

The use of Flo spring technology ensures that heavier screens can be perfectly balanced and adjusted to the users specific requirements.

**Product Code**

Flo Plus Arm  
DYN/026/010

Flo Plus Single Head Mount  
DYN/SHM/001

Flo Plus Top Mount Clamp  
DYN/026/A34

Flo Plus Split Clamp  
DYN/026/A35





Rodney removes the need for a separate arm and post by incorporating the two components into a single piece.

It comes complete with desk clamp, cable management and security features as standard. Rodney is ready to install and use immediately with no add-ons required.

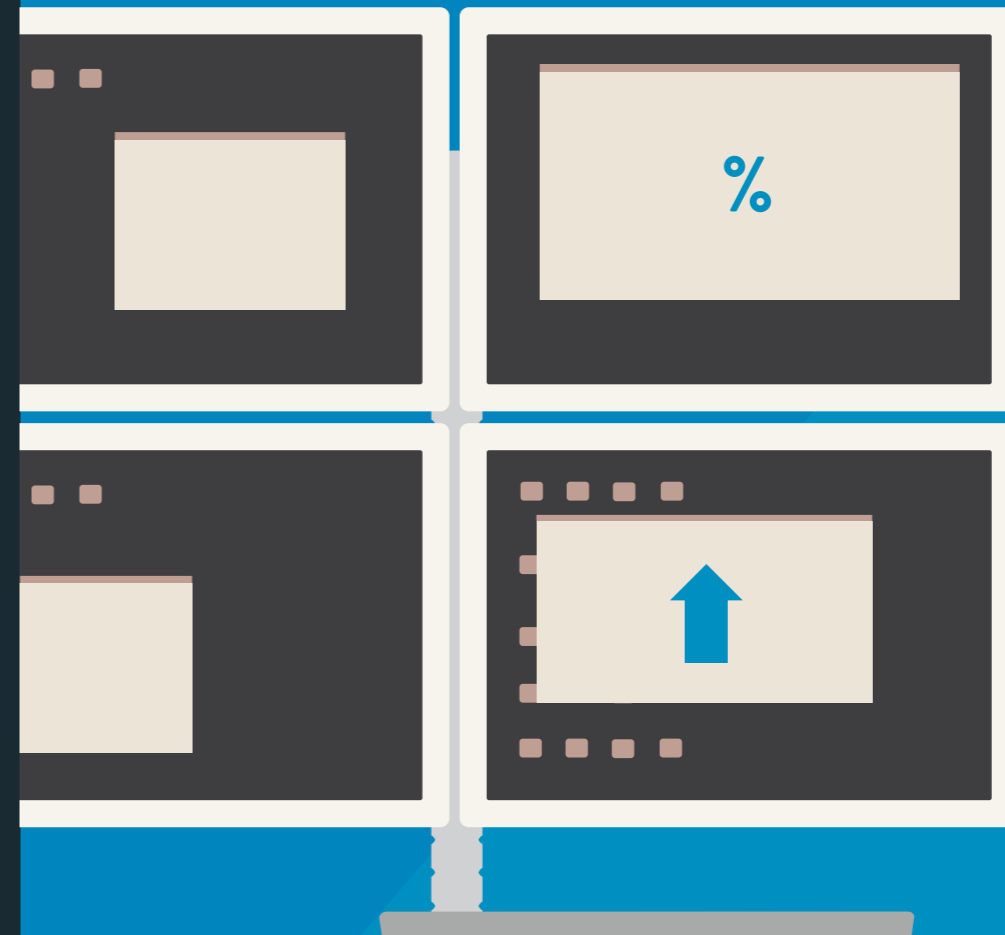
**Product Code**  
Rodney with integrated desk clamp  
SUN/001



# Increase productivity using dual and multiple screens

In the modern office environment it is not only high density workers who use multiple/dual screens. As we become inundated with a constant stream of information from a variety of sources, sometimes adding a second screen can increase efficiency and workflow.

With the launch of Windows 7 in 2009 it became much easier to practice dual screen usage, it's a trend that seems set to continue.





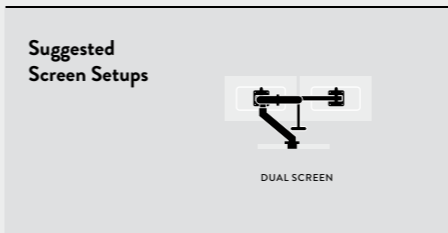
MONITOR ARMS



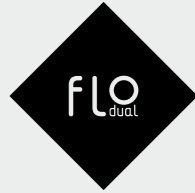
Flo Plus Dual supports dual monitors up to a maximum weight of 18kg in either flat-screen or cockpit configuration. It allows two widescreens up to 24" to be mounted in either portrait or landscape position.

Both heads have fine height adjustment, ensuring that even two different size or thickness screens can be installed and perfectly aligned. The screen support heads have been designed to be reversible, enabling the user to install the screens in a 30° cockpit or flat screen setup by simply swapping the heads around on the support bar.

- Product Code**  
Flo Plus Arm  
DYN/026/010
- Flo Plus Dual Mount Bar  
DYN/DMB/001
- Flo Plus Top Mount Clamp  
DYN/026/A34
- Flo Plus Split Clamp  
DYN/026/A35



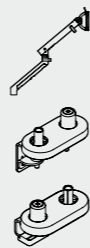




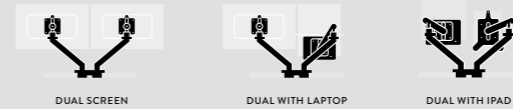
Use two Flo arms with a single desk clamp to support a screen alongside a tablet or laptop, or dual screens if you prefer.

Flo Dual is designed to cater for the increasing number of technology configurations in the workplace. Two Flo arms are attached to the desk by a single clamp, meaning that a single screen can be combined with a laptop or tablet, or dual screens can be implemented. It is the most flexible 'dual' option on the market.

- Product Code**
- Flo Arm  
DYN/013/010
- Flo Dual Split Clamp  
DYN/013/C38
- Flo Dual Top Mount Clamp  
DYN/013/AS18



Suggested Screen Setups



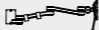
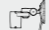


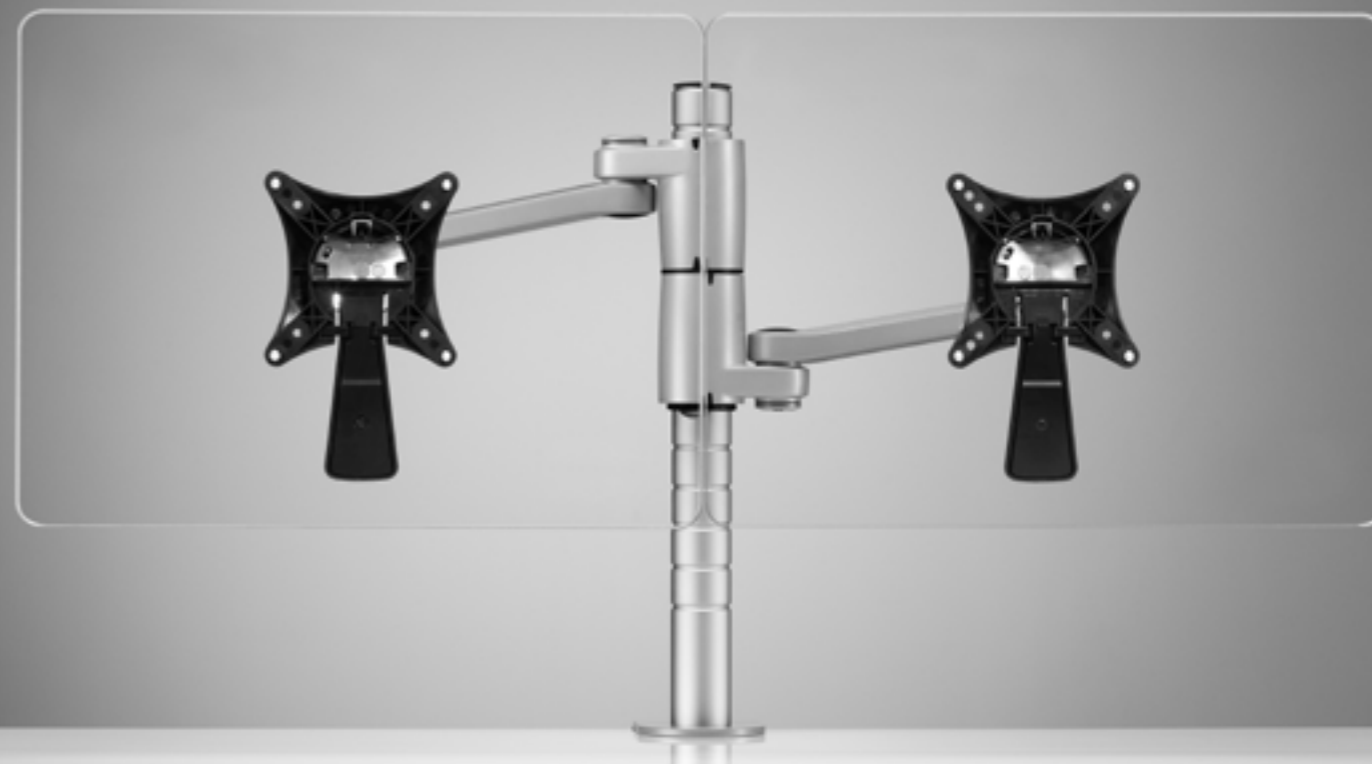
Combine Daisyone with the Wishbone post and clamp system (page 45 - 46) and create a custom workstation.



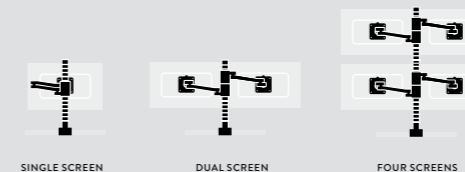
Daisyone is a compact and geometrical monitor support that allows two screens to be mounted at the same height on a single post, without the need for a separate back-to-back bracket.

Daisyone allows the monitor to be positioned in either landscape or portrait format and includes a quick release monitor mount and security feature as standard.

**Product Code**  
 Standard Arm with Quick Release COM/001   
 C-Post with Quick Release COM/003 



**Suggested Screen Setups**



## Multi-screen case study



One of the key demands for trading floors is versatility. The CBS family of products are ideal for these large-scale multi-screen environments and can position any number of monitors in the correct ergonomic set-up to create a productive and efficient trading room environment.

VTB Bank is one of Russia's leading universal banks with a global portfolio. The bank's London office was a particularly interesting project as it is located in an old listed building which had been renovated. Some of the key parts of the building had been retained such as the old lift and the windows and these have been effortlessly integrated into the new renovation by Swanke Hayden Architects.

The main objective of the project was to build a modern, stylish and functional bank based in London. To that end it was very important to provide an excellent working environment for VTB Bank employees.

Flexibility was key and CBS Wishbone monitor arms provided a robust ergonomically designed product that allowed adjustability for employees' various requirements.

Because Wishbone is available in three lengths it made it the ideal multi monitor solution. Wishbone can also be installed at different heights to suit various environments to ensure users have a modern ergonomic workstation.



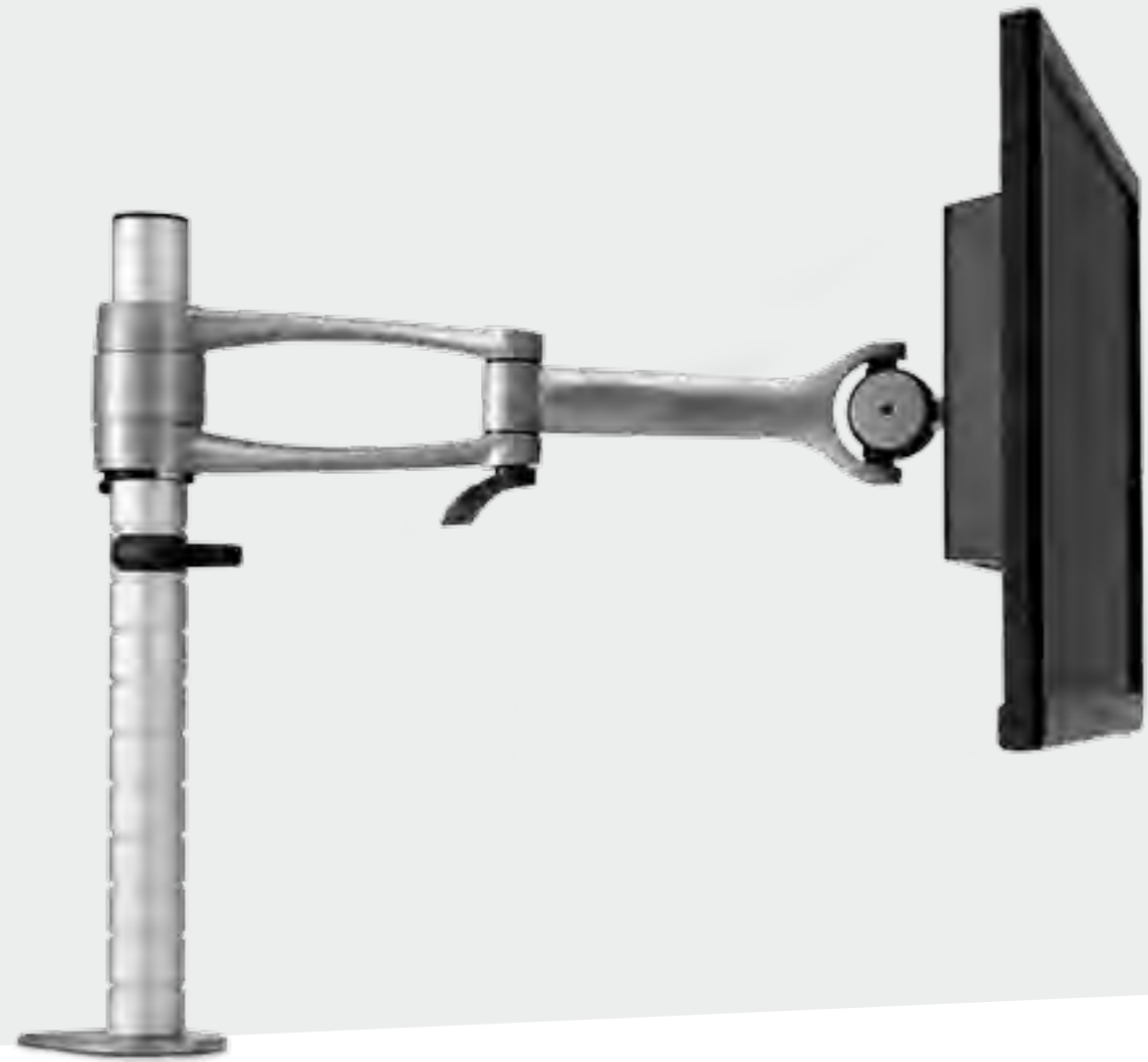
*"The key thing that CBS added was the adaptability and flexibility. We put it (Wishbone) on every desk, there are multiple arms on each workstation to support up to eight multiple screens when the trader requires it. The scalability and modularity was exactly what we were looking for."*

STEVE SHARP | HEAD OF CORPORATE SERVICES









Combine Wishbone with the Wishbone post and clamp system (page 45 - 46) and create a custom workstation.

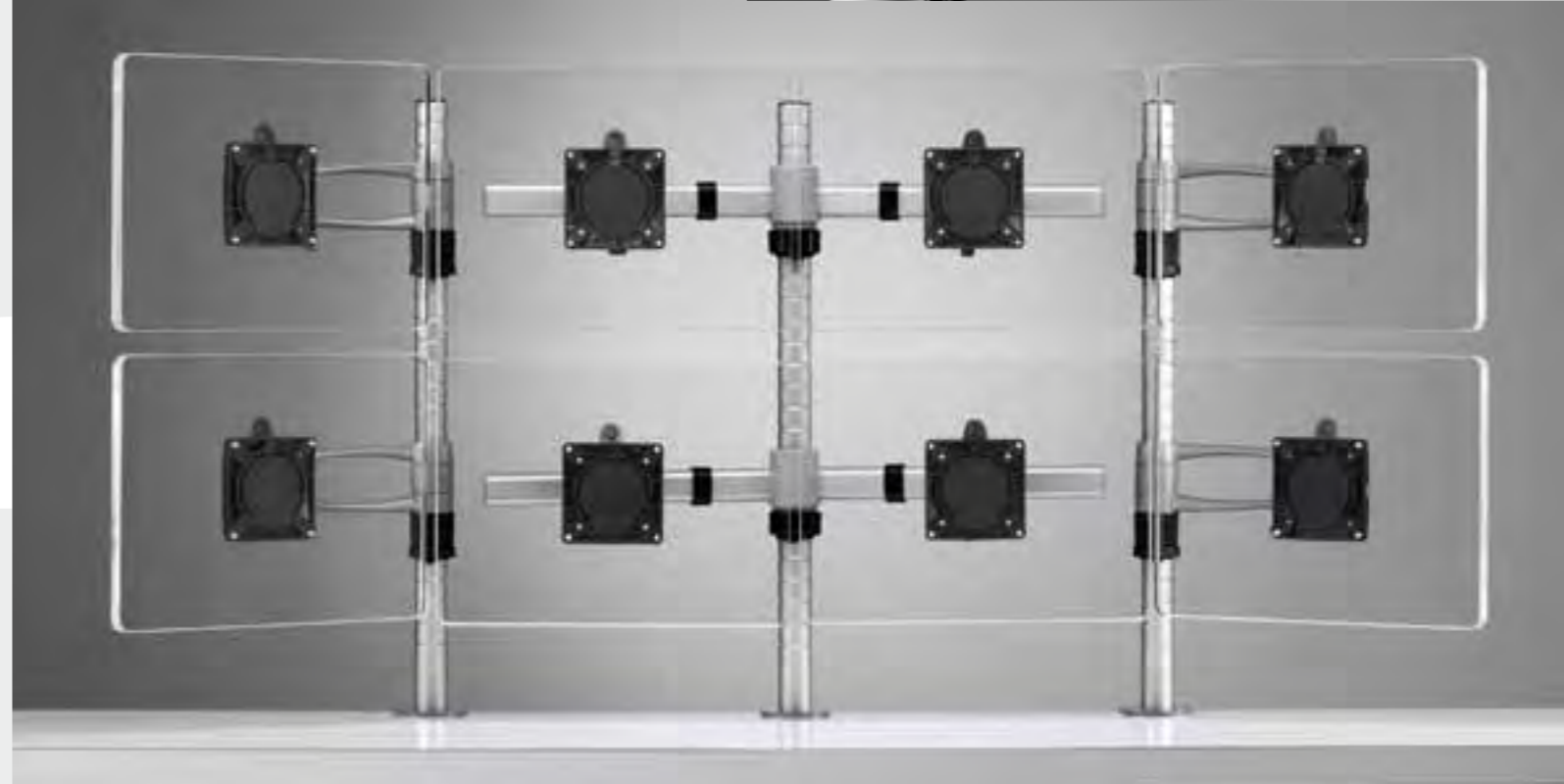


MONITOR ARMS

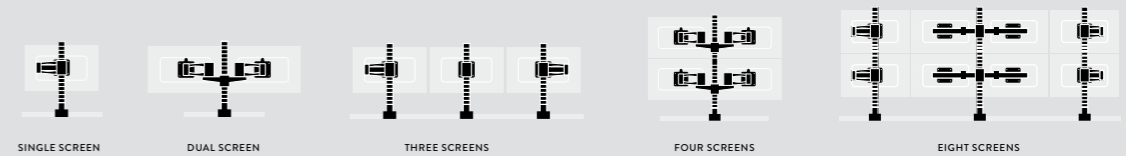
Wishbone has won numerous design and product innovation awards the world over and remains a design classic to this day.

Setting the standard for monitor arms, Wishbone is available in three different versions: Wishbone; Wishbone Forearm; and Wishbone C-Post making it the ideal system for multi-screen applications such as trading floors and control rooms. Wishbone can be installed at different heights along the Wishbone post to suit various environments and users.

- Product Code**  
Standard Arm Quick Release  
WSH/001/PQR 
- Forearm Quick Release  
WSH/002/PQR 
- C-Post arm Quick Release  
WSH/003/PQR 
- Wishbone Dual Bar  
WSH/020/001 



Suggested Screen Setups





Combine Wishbone Plus with the Wishbone post and clamp system (page 45 - 46) and create a custom workstation.



Wishbone Plus can support monitor weights up to 24kg, meaning it can comfortably hold monitors up to 37".

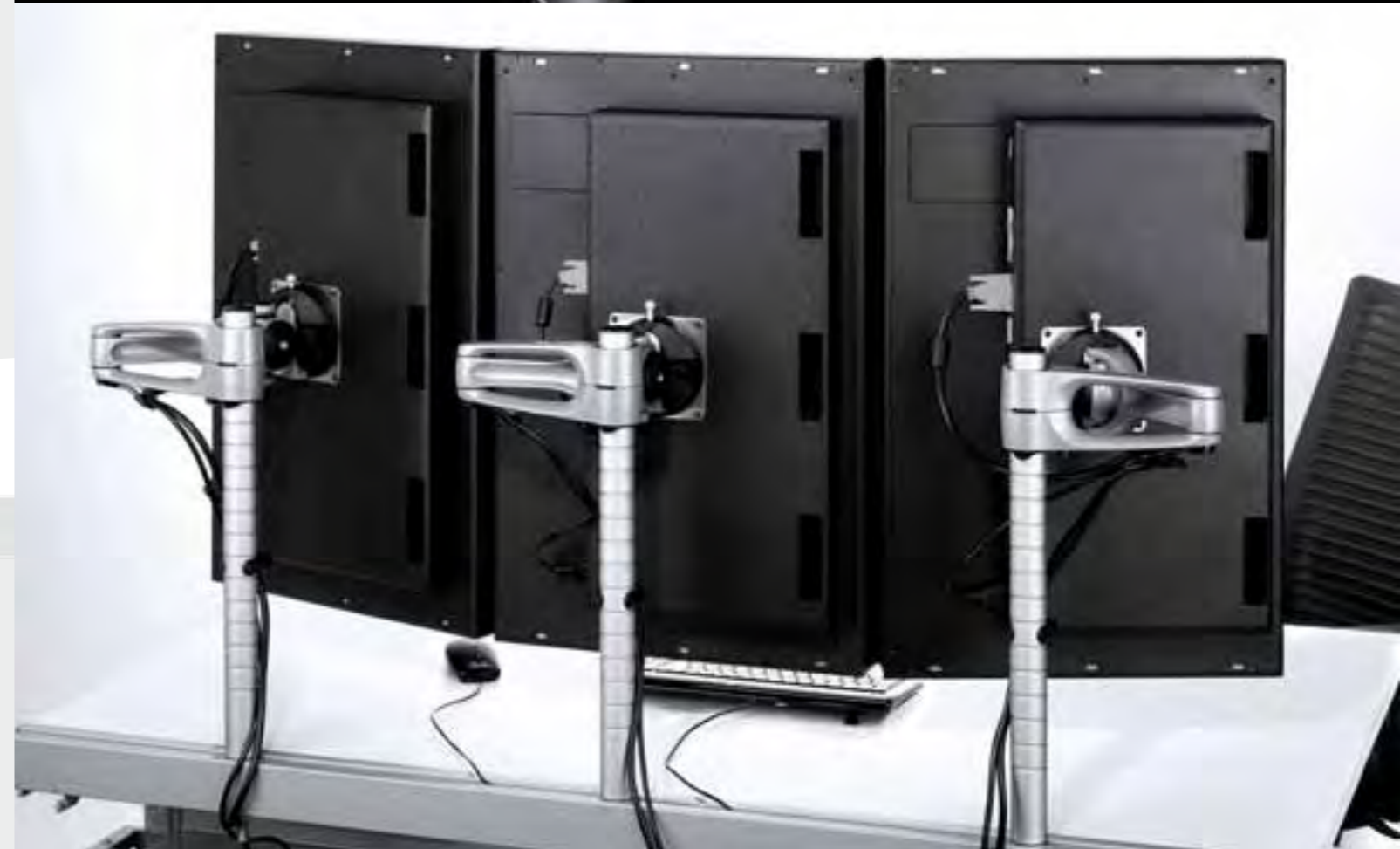
Wishbone Plus is the heavy duty upgrade of our original monitor arm design classic – Wishbone, winner of numerous design and product innovation awards the world over.

Wishbone Plus offers similar reach and articulation to our standard Wishbone arms but include significant enhancements such as a built-in fine height adjustment feature.

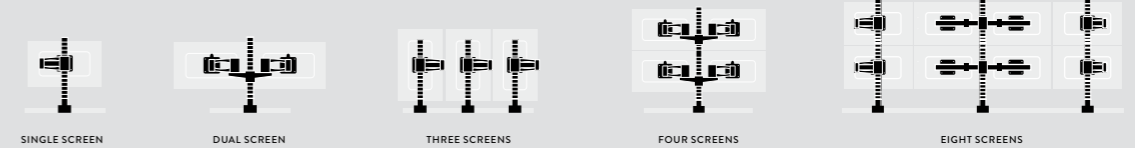
**Product Code**  
Wishbone Plus Arm  
WSH/011/CQR



MONITOR ARMS

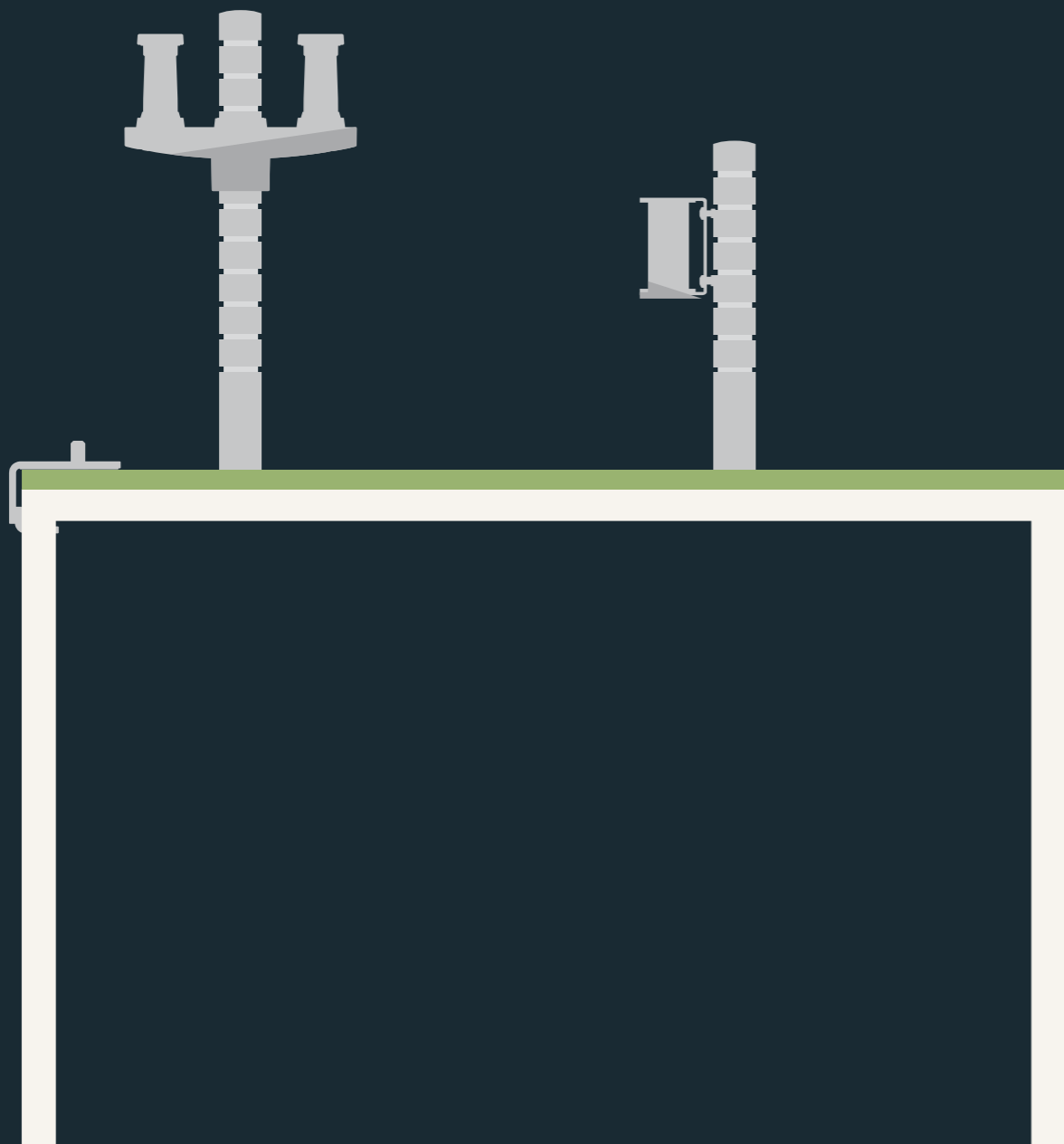


**Suggested Screen Setups**



Furniture  
Fixings

Within most office environments  
desk space is at a premium and  
minimising desktop footprint is  
a key objective.

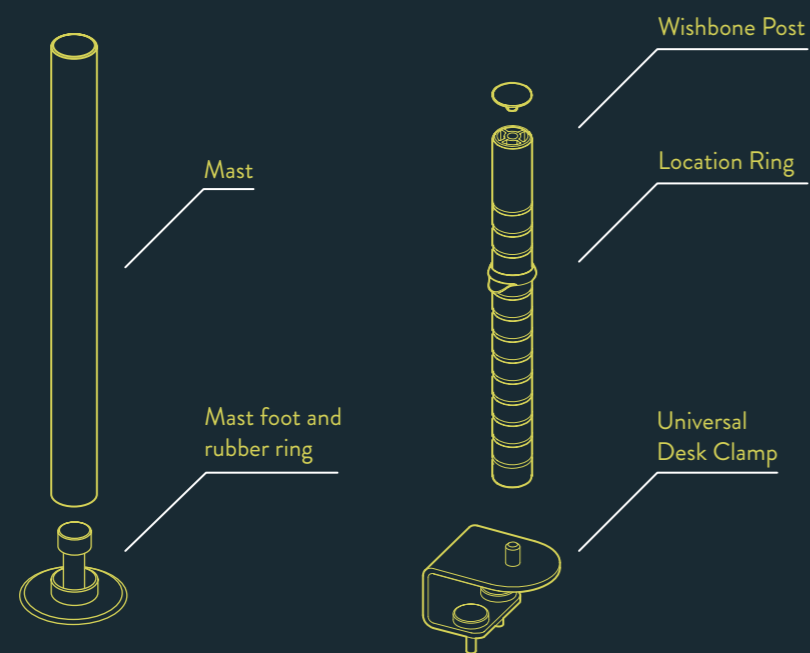


# Wishbone post inspiration

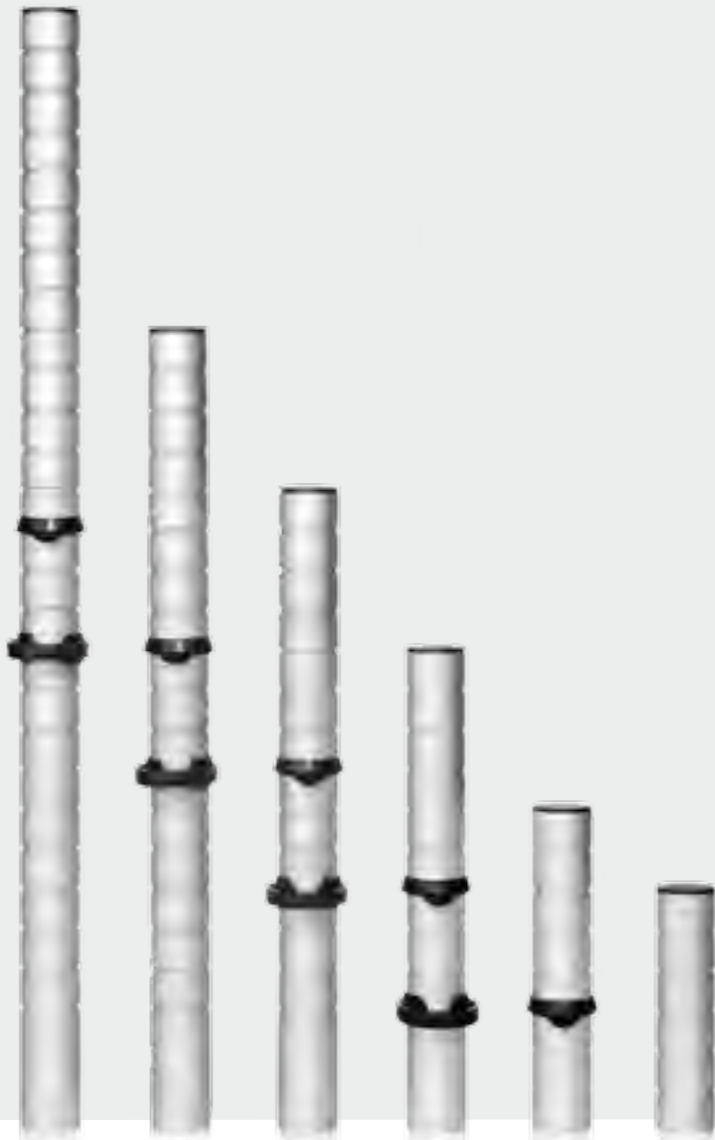
CBS founding directors and enthusiastic windsurfers Peter Bosson and Martyn Colebrook used to spend many happy hours on the water. And it was during one of their sessions that Peter developed the concept for the Wishbone Post System, the innovation that changed how screens are supported in the office today.

Noticing that the weight of the sail was loaded onto a rubber ring on the sail's mast foot, Peter realised the same principle could be applied

in the office by mounting a screen to an arm, and then supporting the weight on a height adjustable post.



# Posts and Clamps



A number of standard fixings are available to enable posts, and therefore monitor arms, to be mounted to the desk surface.

The choice of fixing option depends on the desk design and installation restrictions, but each method provides a firm base for any post and monitor arm combination. Bespoke desk fixing solutions are also available on request for more unusual mounting situations.

**Product Code**  
WSH/PST

The iconic Colebrook Bosson Saunders post. Precision machined grooves for different mounting heights. Available in lengths from 100mm (4") to 700mm (27½")



\*Black to order

## Universal Screen Mount Clamp



For use where there is limited access to the edges of the desk surface. Can be completely disassembled to make installation easier. Fits desk thickness from 13mm (½") to 71mm (2¾").

**Product Code**  
UNI/SMC/001



## Universal Desk Clamp



For use where it is not possible or desirable to drill through the desk surface. Range of standard clamps to fit desk thickness from 13mm (½") to 38mm (1½").

**Product Code**  
UNI/LCLM38



## Universal Top Mount Clamp

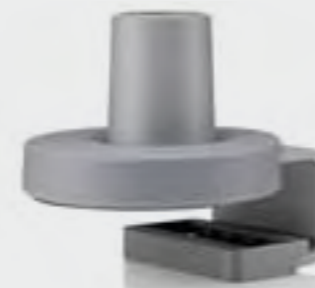


For use where it is not possible or desirable to drill through the desk surface. Range of standard clamps to fit desk thickness from 12mm (½") to 25mm (1"). These are also commonly used on desks with sliding worktops as the clamp has a low profile that won't collide with beams and cable trays etc

**Product Code**  
UNI/TAC/001



## High Load Clamp



The High Load Clamp has been designed for applications where there is a greater weight requirement, often the case in multi-screen set ups from a single post. It is available in two versions (pictured above is Top Mount) and fits desk thicknesses of 13mm-71mm (Split Clamp) and 12-25mm (Top Mount Clamp). Available in silver only.

**Product Code**  
Universal High Load  
Top Mount Clamp  
UNI/HLC/002



Universal High Load  
Split Mount Clamp  
UNI/HLC/001



## Cast Grommet



Pre-drilled hole covered by a decorative grommet. Allows power and data cables to pass through the desk surface. Less clutter on the work surface. Fits desks up to 38mm (1½") thick.

**Product Code**  
UNI/CSG100/K





# Wall and Slatwall Mounting



A complete range of brackets are available to mount CBS arms to slatwalls, and our specials design service can create bespoke brackets for unique mounting configurations.

Privacy screens are an increasingly important part of workplace design, creating individual workspaces from open-plan designs.

Many screens incorporate slatwalls or utility rails which are the perfect place to install flat screen monitors.

## Universal Slatwall and Toolbar Mount



For single screen mounting. Fits most commercially available slatwalls. Jaw height from 32mm to 82mm.

**Product Code**  
UNI/SWB/001



## Multi-screen Slatwall Mount, Cam Action



Enables attachment of multiple screens via a post. Fits a range of commercially available slatwalls. Two-stage cam action enables quick release and side-to-side relocation. Jaw height from 38mm to 78mm.

**Product Code**  
UNI/MSB/001



## Multi-screen Slatwall Mount



Enables attachment of multiple screens via a post. Fits a range of commercially available slatwalls. Jaw height from 38mm to 78mm.

**Product Code**  
UNI/MSB/002



## Universal Wall Mount



Flexible wall mount suitable for single screens.

**Product Code**  
UNI/SWB/002



## Height Adjustable Toolbar Bracket

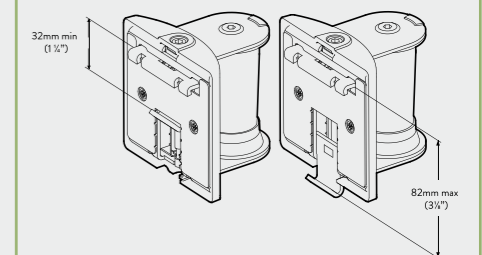


Features fine height adjustment for easy alignment of adjacent monitors. Flip-top design permits rapid fitting or removal of arm. Jaw height from 62mm to 76mm.

**Product Code**  
WSH/ADJ

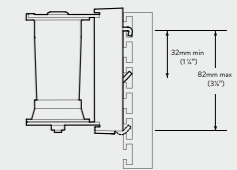


### JAW HEIGHT EXPLAINED



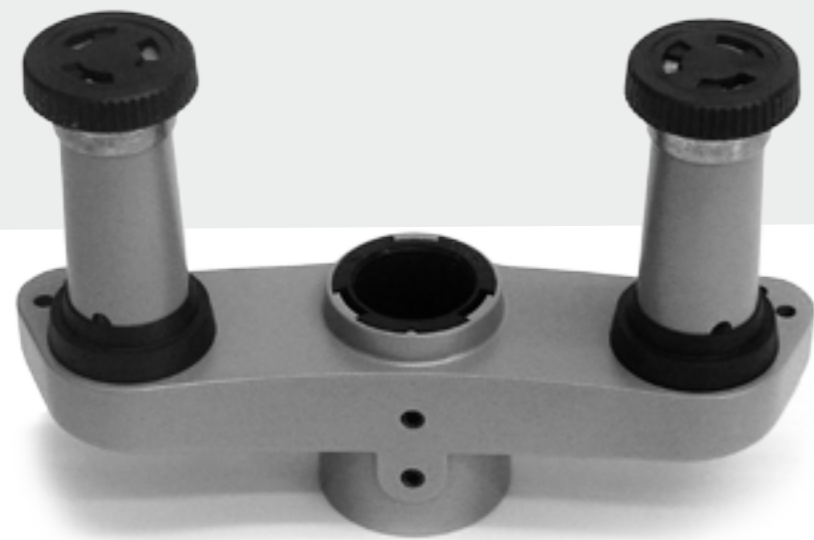
Check to see the slatwall is strong enough to support the load and that the slats fall within range of adjustment.

Example shown: Universal Slatwall and Toolbar Mount



\*Black to order

# Dual Screen Mounting



Our range of dual screen brackets are generally used for mounting two screens to a single post, although due to their flexible nature they can also be used to hold three screens from a single post.

Dual Arm Mount Bracket can support a weight of up to 48kg.

Back to Back Bracket can support a weight of up to 24kg.

#### Product Code

Dual Arm Mount  
Bracket Assembly  
UNI/DMB/001

Back to Back Bracket  
WSH/B2B



\*Black to order

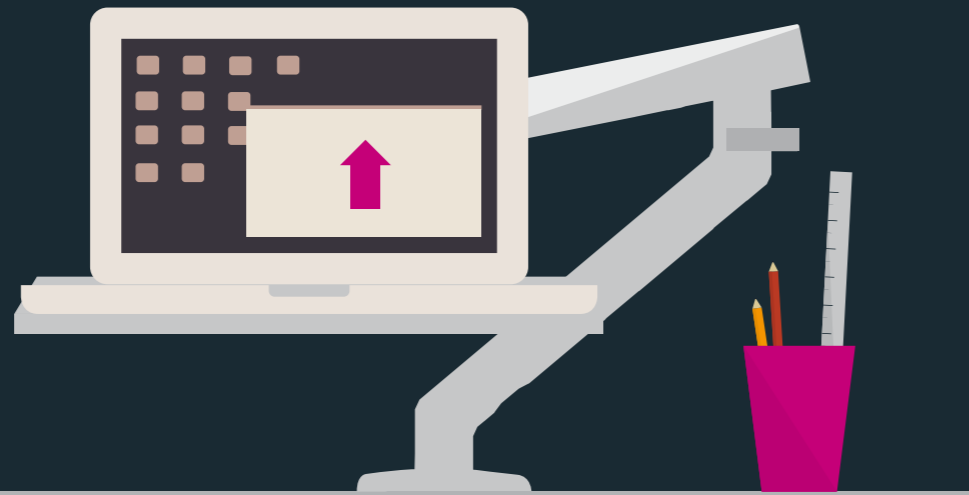


## Mobile Working

Wireless networks allow us to  
work virtually anywhere at any  
time. This flexible approach can  
mean that good ergonomics are  
ignored with laptop and tablet  
users often risking their long-  
term health.

When using a laptop the close position of the screen and keyboard can force a hunched posture which means users can experience serious back and neck pain.

Employers have an obligation to provide laptop users with the ergonomic accessories necessary to enable safe working.





The CBS Laptop Stand is perfect for laptop users who work on the move. Made from a strong, flexible, lightweight aluminium based material, CBS Laptop Stand folds flat and can easily be slipped into a briefcase or laptop bag.

Regular and prolonged laptop use can lead to people working in a hunched position resulting from the fact that the monitor position is too low and the keyboard too close to the body for comfortable use. When used with a separate mouse and keyboard, the CBS Laptop Stand corrects the posture of laptop users by raising the screen height to an ergonomic position.

**Product Code**  
CBS Laptop Stand  
LAP/012



Laptop Mount



The CBS Laptop Mount should be used by Hybrid and Mobile workers to create an effective and ergonomic workstation. Simply combine the laptop with a portable keyboard and adjust the laptop screen for a comfortable and ergonomic viewing position.

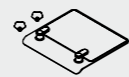
The CBS Laptop Mount is used in conjunction with the Flo monitor arm to elevate the laptop screen to a correct ergonomic height for users. It can also be combined with a separate screen as a secondary device when used with the Dual Flo mounting option.

CBS Laptop Mount utilises the flexible movement of the Flo arm to position the laptop in a variety of positions according to the user requirements.

**Product Code**  
Laptop Mount  
LAP/001

Laptop Mount with  
Docking Station  
LAP/011

Flo Arm  
DYN/013/010



# Homeworking case study

The home is no longer a place simply for relaxation, an increasing number of people are now based there for part or all of their working week. Employers, however, still have an obligation to provide a safe and comfortable environment for homeworkers.

With a career as a Project Finance Lawyer, Laurie Yu decided to take a break from his discipline and embark on a vocation as a Foreign Exchange Trader.

Working from home, Laurie used several monitor screens simultaneously and found that his workstation was rather cramped and cluttered and not conducive to interactive work. The job requires an ability to synthesize large volumes of economic data and execute trades across several trading platforms.

There was a poor workflow between the multiple devices he used - PCs, an Apple Macbook Pro and an iPad. Furthermore, the layout of screens, set at different heights, disrupted transactions and encouraged poor posture. A more holistic ergonomic home workstation was needed that better integrated the various devices.

With this understanding CBS put forward a clean design ideology to eradicate clutter, improve the integration of technology and promote better posture.

A Wishbone C-Post and two Wishbone forearm monitor arms were used to provide an adjustable continuous triple monitor display that was ergonomically optimised to sit at eye level. Moreover, CBS provided a Tablet Mount for Laurie's iPad allowing him to easily adjust and position the tablet to suit his posture.

The new setup provides a seamless view of trades and data and significantly increases the space for paperwork documentation. It was also quick and easy for Laurie to set up the new monitor arms and to dismantle them as he occasionally needs the work desk as an additional dining table when he has guests!



*"The equipment from CBS has greatly enhanced my home office. The functionality of design not only assists workflow and ergonomics, it also means a multiuse workspace can be efficiently transformed into a conference or dining table."*

LAURIE YU



Tablet Mount



The CBS Tablet Mount ensures that Flo is unrivalled in its ergonomic capability to be used alongside the iPad.

The range of movement provided by the Flo spring mechanism combined with +/- 40° of vertical tilt provided by the D-ring ensures the tablet can be easily positioned as an input (touch) device as required.

The Tablet Mount attaches easily to the Flo head and features a lock to act as a theft deterrent.

Product Code

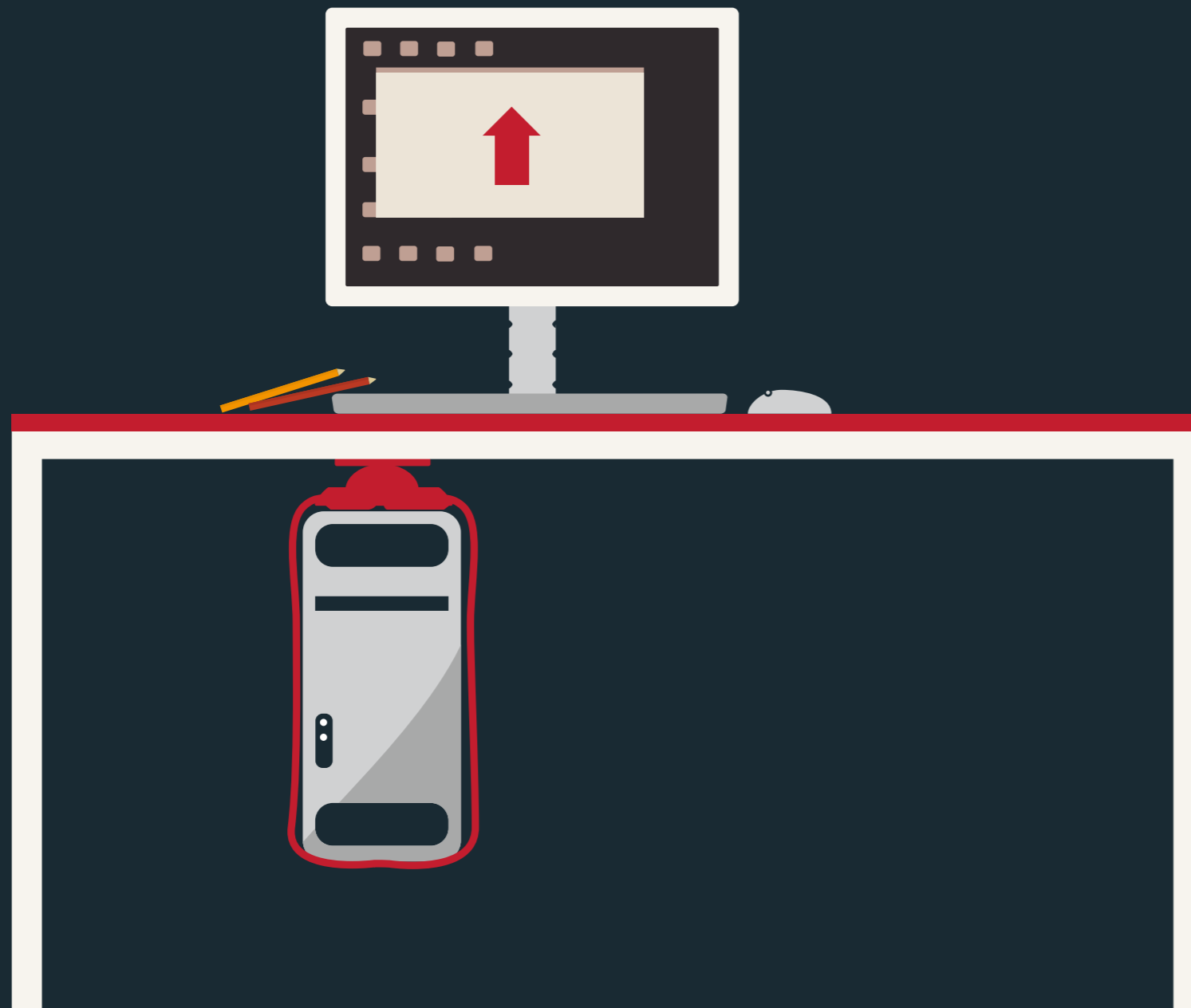
Tablet Mount  
IPM/001/001

Flo Arm  
DYN/013/010



## CPU Supports

The Colebrook Bosson Saunders range of CPU holders stows computers underneath the desk, this frees up space and helps to prevent accidents and damage. The supporting bracketry also allows easy access to the front and back of the CPU, facilitating maintenance and hardware upgrades.



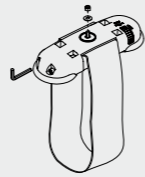




Loop, with its elegant strap and base, is a strong yet lightweight solution for CPU storage.

It comes in the smallest possible box to minimise logistical costs and packaging waste. Loop is quick and simple to install and creates the minimum visual impact on the workspace.

**Product Code**  
Loop  
CPU/010



# Office case study



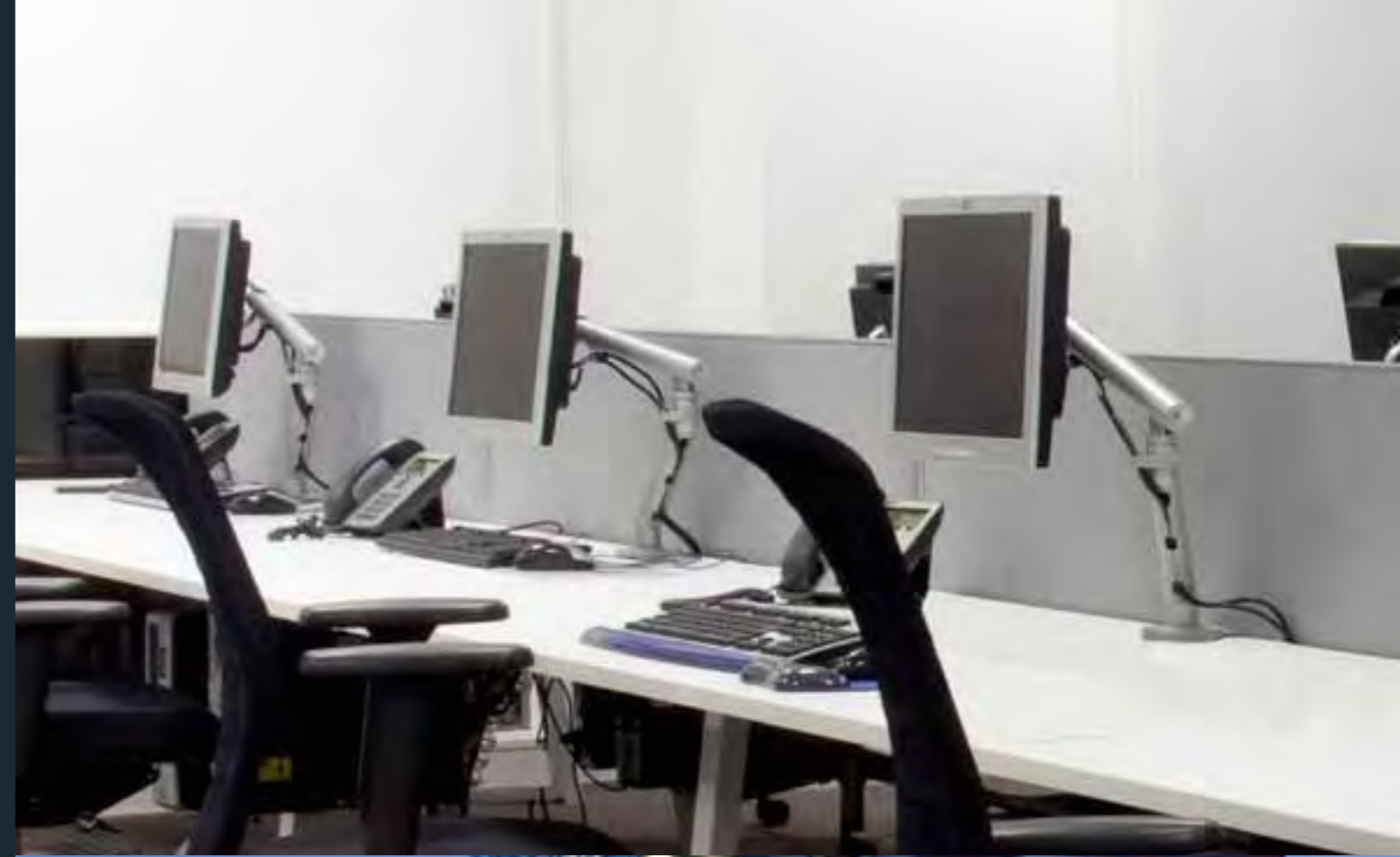
By mounting monitors away from the desk surface, stowing CPUs safely and securely, and providing storage and cable management solutions, our products help to better integrate people into aesthetically pleasing and healthy working environments.

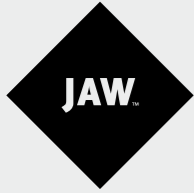
CBS worked closely with Glasgow City Council throughout the design process in a consultancy role, providing expert advice on how to create an ergonomically optimised workspace. The Tomorrow's Office programme aimed to reduce city centre office accommodation and change the way the Council works, saving over £5.9m every year for the next 25 years.

During the design stage, City Building were looking to manufacture a typical 'Tomorrow's Office' four person workstation within their showroom

and were presented with a sample workstation of CBS' Flo monitor arms that were suitable to the design and aesthetically pleasing.

Flo proved to be the perfect fit and was specified throughout the building. Accordingly, CPU holders and Slinky cable management units were also chosen to fulfil the design ideology.

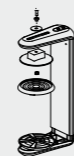




Jaw is a simple and elegant CPU holder that enhances the look of any workspace through minimalist and unobtrusive design.

The clamping function of the aluminium body grips securely to the top and bottom of the CPU whilst giving it a sleek profile.

**Product Code**  
Jaw  
CPU/013



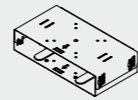


The CBS Thin Client Mount is designed to securely house Thin and Zero Clients under the desk or behind desktop monitors.

Mounting between a VESA plate and a monitor, or under a desk using a CBS CPU stand fixing, the Thin Client Mount can be adjusted to accommodate a range of Thin Clients from 38 to 67mm depth.

Product Code


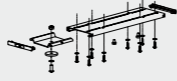
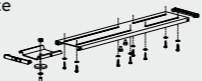
Thin Client Mount  
TCM/001





Provide maximum flexibility for under desk CPU storage, there are three standards that can be combined with both Jaw and Loop to securely fix the CPU to the workstation.

Easy to install. Sliding function rotates 360°.

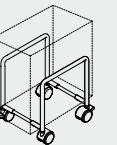
- Universal Mounting Rotating Bracket  
UNI/ROT 
- Universal Slide & Rotate 350mm  
UNI/SR350 
- Universal Slide & Rotate 520mm  
UNI/SR520 



ADDB Mobile is ideal for usage in mobile offices or environments where computers are regularly relocated.

Cost-effective mobile CPU holder solution. Easy to install and remove.

**Product Code**  
ADDB Mobile  
ADDB/M/TR

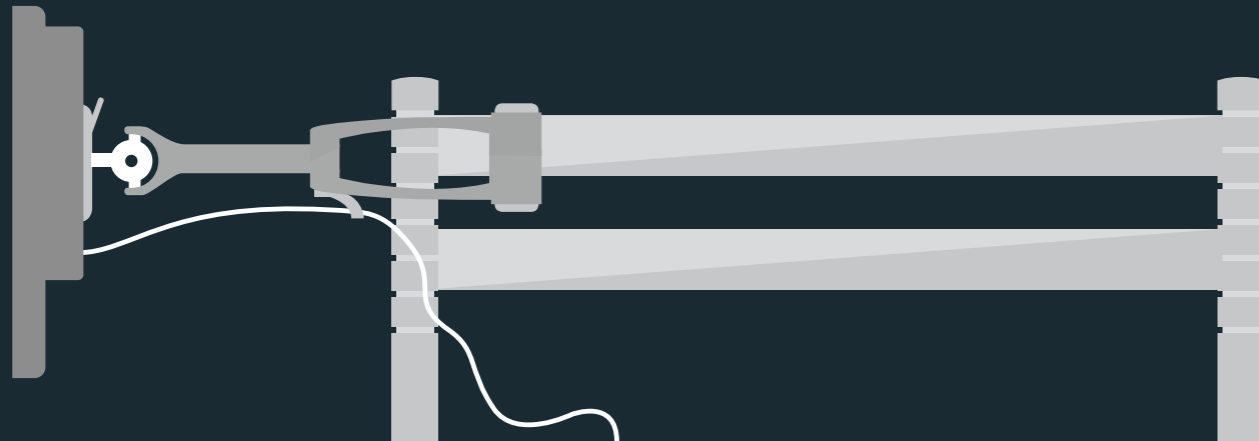


## Workstation Organisation

CBS has created a range of workstation organisation products, allowing for a more efficient and productive working environment and helping to declutter the workspace.

Desk cable management is an essential part of office design, even in today's wirelessly networked office. A number of cables are required to deliver power and data to the

workstation and unsecured cables can pose a serious health and safety risk, take up unnecessary space, and make the workspace look untidy and disorganised.



Slinky



Slinky is a high-capacity cable management system of plastic vertebrae built around a flexible spine.

Each vertebra has four separate compartments enabling power, data and voice cables to be separated. Slinky can easily be attached to the underside of the desk with a cast iron base anchoring it securely to the floor.

**Product Code**

Slinky - 800mm (31 1/2")  
WM3/001

Slinky - 1200mm (47 1/4")  
WM3/1200

Slinky - 1500mm (59")  
WM3/1500



Toolbar



Strong and stylish, Toolbar is mounted on posts at any pre-set height and is sturdy enough to handle multi-screen layouts within the entire range of Colebrook Bosson Saunders monitor arms\*

Made of aluminium with glass reinforced end connectors, to provide strong and safe support, Toolbar is available to fit 1800mm, 1600mm, 1200mm and 1000mm desk widths.

**Product Code**  
Toolbar for 1800mm (70 7/8") - 1000mm (39 3/8") desk

- WSH/PTB/1800
- WSH/PTB/1600
- WSH/PTB/1200
- WSH/PTB/1000



\* (excluding Rodney)



# Passenger terminal case study

**Heathrow**   
Making every journey better.

Any visit to a modern passenger terminal showcases the very best in cutting-edge design and interior styling. IT equipment is clearly visible at check-in areas (where space is at a premium), self check-in areas, information points, and internet cafés.

Opened in 2008, London Heathrow Terminal 5 is the largest free-standing structure in the United Kingdom. Terminal 5 is designed to ultimately handle 35 million passengers a year.

The building's lead architects were from the Richard Rogers Partnership and production design was completed by aviation architects Pascall and Watson. Terminal 5 took 19 years from conception to completion, including the longest public inquiry in British history.

As part of the new build the BAA approved check-in and security desk systems within the passenger terminal include monitor stands, keyboard and phone trays.

CBS' Wishbone monitor arm solution helped to create the aesthetic simplicity and quality desired with a functional, robust and highly flexible design for a great looking and ergonomically optimised check-in area.

The benefit of workstation ergonomics and equipment being close at hand is to speed up the check-in process for greater efficiency while improving the long term health and productivity of employees.

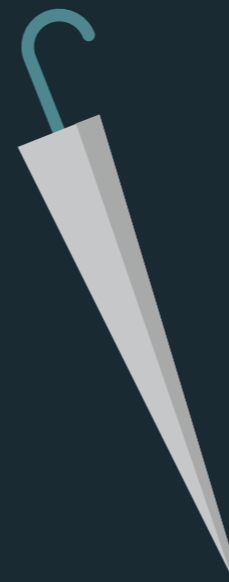


# AV/VC Mounts

From homes to airports,  
reception areas to meeting  
rooms, large format displays are  
increasingly commonplace.

Colebrook Bosson Saunders offers a variety of mounting solutions to make AV displays work for you. Screens of all shapes and sizes can be mounted in portrait or landscape on walls,

ceilings and floors, creating a stylish, functional and adjustable solution for any AV or video conferencing application.





AVALL Complete is the leading AV/VC solution from CBS. With enhanced media storage as standard, it comes pre-assembled and meets most single screen applications, it can also be used for mobile or static installations.

**AVALL Complete contains:**

- Rack mounted media storage facility
- Universal camera mount for camera positioning above and below the screens
- Universal codec mount
- Additional cable management brackets
- Flat screen mount bracket
- Extension brackets (for large format > 55" screens)
- Lockable castors
- Column for cable storage
- Perforated front and lockable back panel
- Compatible with VC equipment from most of the leading manufacturers including Polycom; Lifesize; Cisco and Radvision

**Product Code**

AVALL Complete  
AVS/003/K01

To customise for dual screen usage simply add DUAL SCREEN KIT.  
AVS/001/DSK

To customise for Blade usage add BLADE VC KIT.  
AVS/001/VC2





AVALL Standard is a flexible package, it provides a mobile or static minimalist solution for supporting single and dual screen applications with the option of adding additional accessories for specific requirements.

AVALL Standard contains:

- Column for cable and AV equipment storage
- Low profile base
- Lockable castors
- Perforated front and lockable back panel
- Flat screen mount bracket

Product Code

AVALL Standard  
AVS/001



AVALL Standard can be customised by simply adding the following accessories:

- |                      |             |
|----------------------|-------------|
| Dual Screen Kit      | AVS/001/DSK |
| VC Kit               | AVS/001/VC1 |
| Blade VC Kit         | AVS/001/VC2 |
| Shelf Kit            | AVS/001/SLF |
| Cable Management Kit | AVS/001/CBM |



# Retail case study



CBS products are ideal for use in customer-facing retail and hospitality environments. From check-in desks, interactive signage and meeting rooms to back office and security monitoring stations, IT is now essential for the smooth operation of businesses of any size.

In Colombia, HSBC wanted to ensure that their clients, visitors and staff enjoyed extended comfort and service in their offices.

The more traditional retail branches experienced some adjustments in their colours and furnishings. To develop the furnishing plan, Multiproyectos' research and development team assessed the bank for what kind of material and functionality would be required. Modifications were proposed and implemented for the workstations to ensure improved ergonomics.

Renowned for its design purity and ergonomic benefits, CBS Wishbone monitor arms were specified for HSBC's desks to reinforce the high-end style and functionality of their offices.

The Tate Britain gallery has a simple mission statement, to promote public understanding and enjoyment of British, modern and contemporary art.

Tate Britain features a number of personal computer kiosks that visitors can use to plan their time in the gallery, find specific pieces of work, and join the Tate as a member. To create a space saving, clean and ergonomic workstation, Tate Britain positioned screens supported by a C-post Wishbone monitor stand attached to a 400mm Wishbone post. And by using an ergonomic keyboard the Tate were also able to create a healthy space for usage by their visitors.



- 1
- 2

1. Tate Britain / Wishbone
2. HSBC Colombia / Wishbone



CBS VCALL is a cost-effective and minimalist solution to meet your VC requirements in either single or dual screen format.

Simplicity and ease of use is at the heart of its design, it arrives pre-assembled for easy installation and can be used for mobile or static installations.

**CBS VCALL contains:**

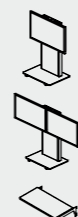
- Single and dual screen brackets
- Low profile base with lockable castors
- Universal codec mount
- Universal camera mount
- Customisable front panel for enhanced branding opportunities
- Compatible with VC equipment from most of the leading manufacturers including Polycom; Lifesize; Cisco and Radvision
- Shelf option available

**Product Code**

CBS VCALL Single Screen  
AVS/010/K01

CBS VCALL Dual Screen  
AVS/010/K02

CBS VCALL Shelf Kit  
AVS/010/SLF



# CBS Orgatec Stand

CBS cleaned up the 'stand of the week' awards at Orgatec 2012 with a retro stand design that stood out from the crowd with its innovative marketing approach and creativity.

Mixing scaffolding boards, theatre lighting and wine crates with vintage leather Chesterfield sofas and industrial racking, CBS demonstrated a commitment to unique design and original thinking in all areas of our business.



STAND OF THE WEEK  
ON OFFICE MAGAZINE



STAND OF THE WEEK  
MIX INTERIORS

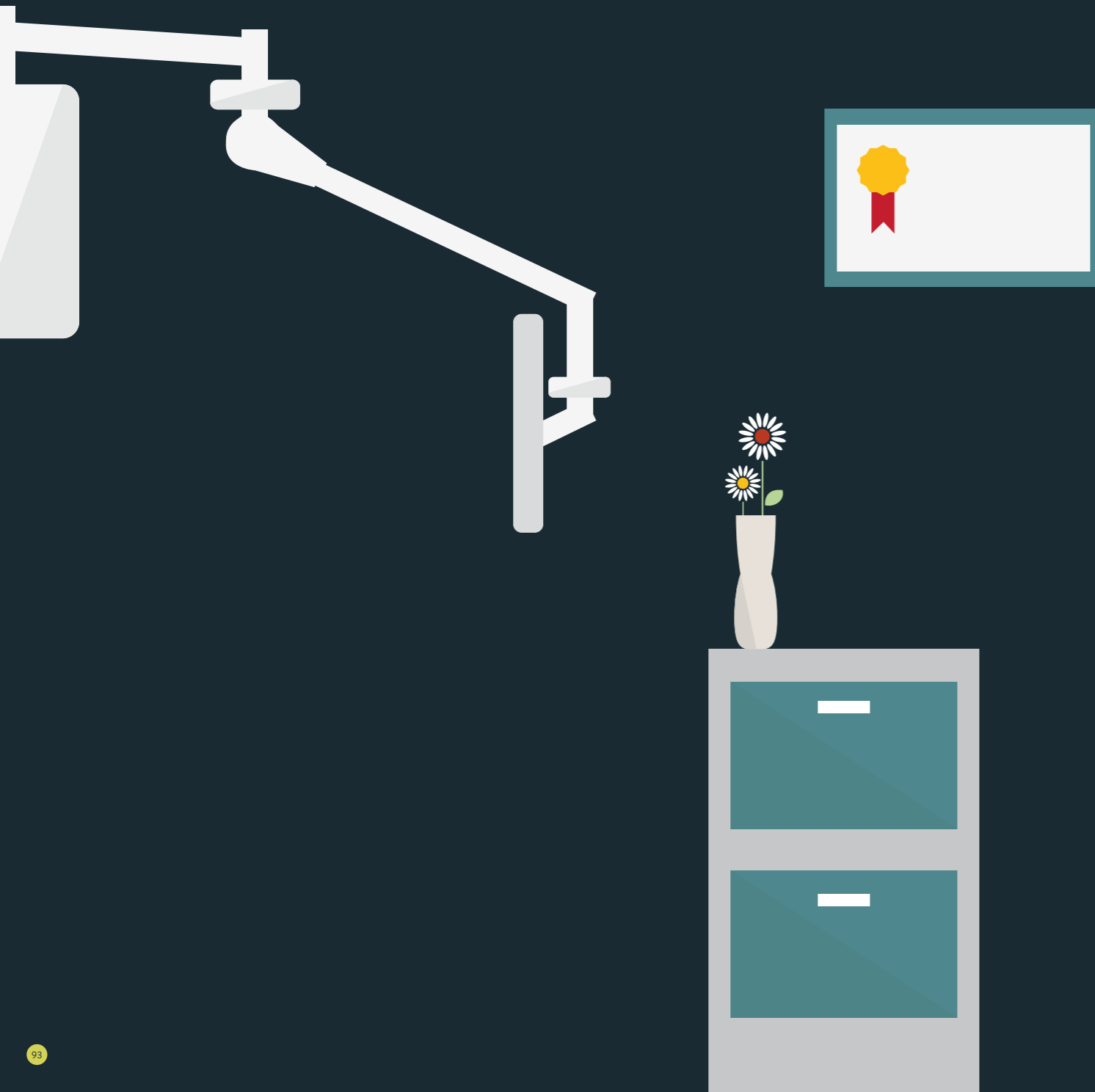


## Healthcare

Through utilising Flo Spring Technology and by focusing on the patient/carer interface, CBS has been able to create the most advanced healthcare product of its type in the world.

Healthcare infotainment is the provision of digital services that combine information and entertainment. In practice this means that the patient and the medical professional share the

same screen for varied tasks such as watching TV and playing games to inputting patient data and writing prescriptions.





CBS Hi1.



HEALTHCARE

CBS Hi1 (healthcare infotainment 1) is the next generation of infotainment screen support, offering improved functionality and adjustability along with smoother and easier usage.

Hi1 is powered by a design that is more environmentally friendly, safer, and makes it physically easier for patients to move and adjust their monitor screen as they interact with technology while recuperating.

- Powered by award-winning Flo Spring Technology
- Hi1 features pre-installed cables (set to specification) for easy installation
- Over 1.3m horizontal reach and 0.5m vertical adjustment
- Full 360° mid joint articulation
- 30° of terminal tilt
- Hygienic and secure with integrated power and data cable management
- Wall mounted IT cover to keep data supply and cables hygienically stored

**Product Code**

CBS Hi1 Arm  
(700mm Front, 750mm Rear)  
**HCA/001**

CBS Hi1 Arm  
(700mm Front, 1150mm Rear)  
**HCA/003**

CBS Hi1 Wall Mount Box  
**HCA/001/WMB**



# Partner Hub

Our Partner Hub is a place where you can download and store a wide range of our product files and images.

Designed to be easy to navigate and quick to use, you will find the following product files within our Partner Hub:

- CAD drawings
- Hi and low resolution product images
- Installation instructions
- Logos
- Product information
- Product specification
- Videos
- Corporate brochure and Pricelist

<http://partners.colebrookbossonsaunders.com>

# Ergonomics Tutor

The Ergonomics Tutor is a series of free online tutorials developed by CBS with the express purpose of improving workstation ergonomics for users who work with traditional forms of IT including personal computers, laptops, or tablet technology.

## WHAT IS WORKSTATION ERGONOMICS?

Ever sat at your desk and wondered why your back was aching? Or wondered why you had elbow strain or neck ache at the end of the working day? These are classic symptoms of working at a desk (often with a personal computer) that isn't set up correctly to your body's requirements.

Workstation ergonomics is about ensuring that your desk, chair, screen, and keyboard are set to the optimum position for your body to operate most effectively with the least amount of physical strain.

## SIGN UP

Simply sign up and take the short tutorials at your own speed. With your user name and password you can log-in at anytime and continue your progress, the full eight modules should take no longer than 40 minutes to complete.

On completion of the Ergonomics Tutor you will be able to set up a fully functioning ergonomic workstation. The content within these tutorials are based on CBS' RIBA approved CPD presentation 'An introduction to workstation ergonomics'.

<http://ergonomic.colebrookbossonsaunders.com>

**UK (HEAD OFFICE)**

35 Union Street  
London SE1 1SD  
T +44 (0)20 7940 4266  
E info@cbsproducts.co.uk

[www.colebrookbossonsaunders.com](http://www.colebrookbossonsaunders.com)

**AUSTRALIA**

12 Georgiana Street  
Melbourne, Victoria, 3008  
T +61 (0)1300 931 927  
E info@cbsproducts.com.au

**GERMANY | AUSTRIA  
NETHERLANDS**

David Stevenson  
Regional Manager  
T +49 (0) 170 9342393  
E david.stevenson@cbsproducts.co.uk

**FRANCE**

Farouk Cherifi  
T +33 (0) 6 50 01 70 54  
E farouk.cherifi@cbsproducts.co.uk

**ITALY | SPAIN  
PORTUGAL | TURKEY**

Nicola Citarella  
T +44 (0)20 7940 4266  
E nicola.citarella@cbsproducts.co.uk

**EASTERN EUROPE | RUSSIA**

Vicky Richardson  
T +44 (0)20 7940 4266  
E vicky.richardson@cbsproducts.co.uk

**HONG KONG | CHINA**

Leo Chung  
T (852) 2877 3836  
E leo.chung@cbsproducts.co.uk

**INDIA | SINGAPORE | SE ASIA**

Stephen Roberts  
T +44 (0)20 7940 4266  
E stephen.roberts@cbsproducts.co.uk

**MIDDLE EAST | AFRICA**

Vicky Richardson  
T +44 (0)20 7940 4266  
E vicky.richardson@cbsproducts.co.uk

**SOUTH AMERICA**

Michael Tyrrell  
Regional Manager  
T 001 786 503 9908  
E michael.tyrrell@cbsproducts.co.uk

